



SIMPLE MANUAL

Wireless Sound Bar

Please read this manual carefully before operating your set and retain it for future reference.

To view the instructions of advanced features, visit <http://www.lg.com> and then download Owner's Manual. Some of the content in this manual may differ from your unit.

MODEL
SJ2



MFL70585641

www.lg.com

Copyright © 2020 LG Electronics Inc. All Rights Reserved.
1809_Rev01



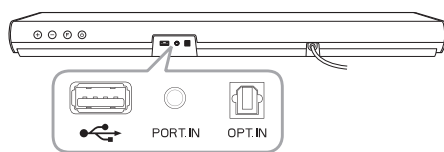
Front Panel

The buttons are located on the rear.



- Standby
- Selects Function.
- Adjusts Volume.

Rear Panel



- (USB) Connect to a USB device.
- PORT. IN (Portable) Connect to a Portable device.
- OPT. IN (Optical) Connect to an Optical device.

1 Subwoofer Connection

Place the wireless subwoofer near the sound bar and follow steps below.

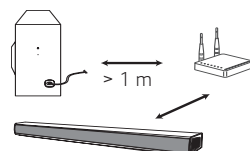
- 1 Connect the power cord of the sound bar and the wireless subwoofer to the outlet.
- 2 Turn on the sound bar.
- 3 The sound bar and wireless subwoofer will be **automatically** connected. The subwoofer's green LED turns on.

Manual Subwoofer Connection

If the subwoofer does not make emit any sound, you can try connecting it manually.

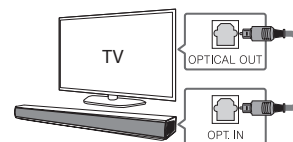
- 1 Press **Pairing** button on the rear of the wireless subwoofer.
 - The green LED on the rear of the wireless subwoofer blinks quickly. (If the green LED does not blink, press and hold the **Pairing** button.)
- 2 Turn on the sound bar.
- 3 Pairing is completed.
 - The green LED on the rear of the wireless subwoofer turns on.

Keep the sound bar and the subwoofer away from the device (ex. wireless router, microwave oven, etc.) over 1 m to prevent wireless interference.



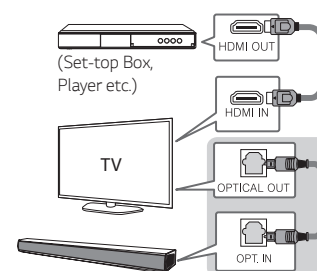
2 TV Connection

- 1 Connect the sound bar to the TV using an Optical cable.
- 2 Set up [External Speaker (Optical)] on your TV setting menu.



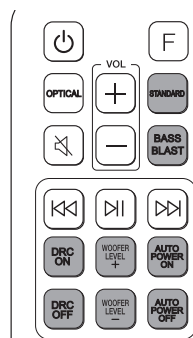
Additional Device Connection

- 1 Connect to the external device as follows.



- 2 Set the input source by pressing **OPTICAL** on the remote control or pressing **F** repeatedly.

Remote control



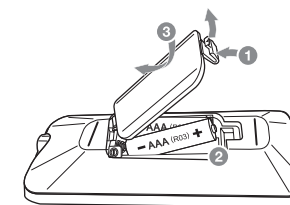
STANDARD/BASS BLAST: Selects the sound effect.

DRC ON/OFF : Dynamic Range Control optimizes the volume level of compatible Dolby Digital content.

WOOFER LEVEL +/-: Adjusts the volume level of subwoofer.

AUTO POWER ON/OFF: Automatically turns on by an input source.

Replacement of battery



Additional Information

Specification

Power requirements	Refer to the main label.
Power consumption	Refer to the main label.
Dimensions (W x H x D)	Approx. 660.0 mm x 56.0 mm x 99.0 mm With foot
Bus Power Supply (USB)	5 V 500 mA
Amplifier (Total RMS Output power)	160 W RMS

Design and specifications are subject to change without notice.

About Ferrite Core (Optional)



Wind power cord cable around the ferrite core twice.