

SONY®

HDD AUDIO PLAYER

Quick Start Guide

GB

快速入门指南

CS



HAP-Z1ES

About manuals



Quick Start Guide (this manual)

Explains procedures for setting up the unit to transfer music files on the computer automatically and play them back.
Visit the website below for more information on the unit.



Help Guide (online manual)

Provides information on how to use the unit.

- Detailed information is included on how to use functions such as DSEE.
- Quickly access the latest information and other information you want by utilizing the "Troubleshooting" section or searching by keyword.

HAP-Z1ES:

<http://rd1.sony.net/help/ha/hapz1es/>

HAP Music Transfer/HDD Audio Remote:

<http://rd1.sony.net/help/ha/hap1/>



Reference Guide

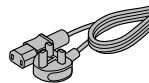
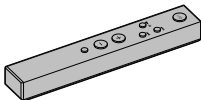
Includes information on specifications and notes on use for the unit.

Supplied accessories

☐ Remote control (1)

☐ R03 (size-AAA) batteries (2)

☐ AC power cord (mains lead) (1)



☐ LAN cable (1)

☐ Audio cord (1)

☐ IR blaster (1)

☐ Monaural mini-plug cable (1)

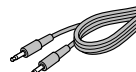
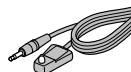
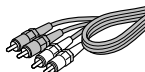
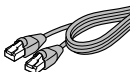


Table of Contents

Features	4
Prep. 1 Connecting an amplifier	5
Prep. 2 Connecting to a network with a LAN cable	6
Prep. 3 Plugging in the unit	7
Prep. 4 Configuring the initial settings of the unit	8
Prep. 5 Configuring the settings of your computer to use HAP Music Transfer	10
Enjoying music	12
Troubleshooting	14

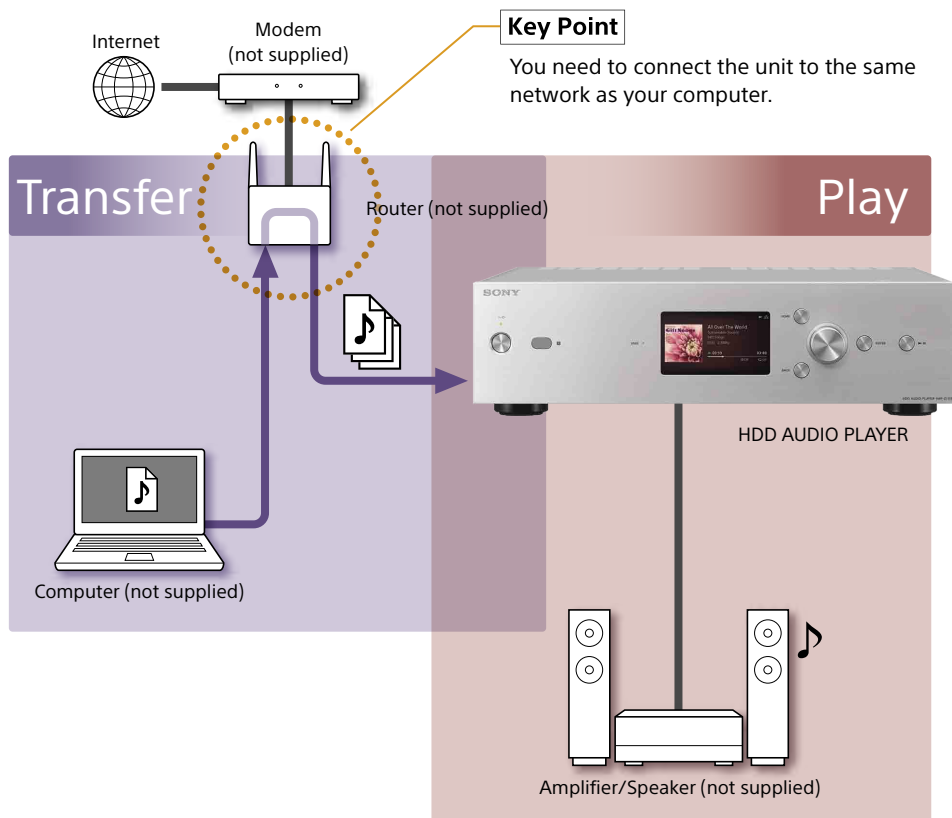
For more details on how to use See the
Help Guide (online manual)
introduced on the previous page.

Trademarks

- iPhone, iPad and iPod touch are trademarks of Apple Inc., registered in the U.S. and other countries. App Store is a service mark of Apple Inc.
- Google Play™, Android™ and their respective logos are trademarks of Google Inc.

GB

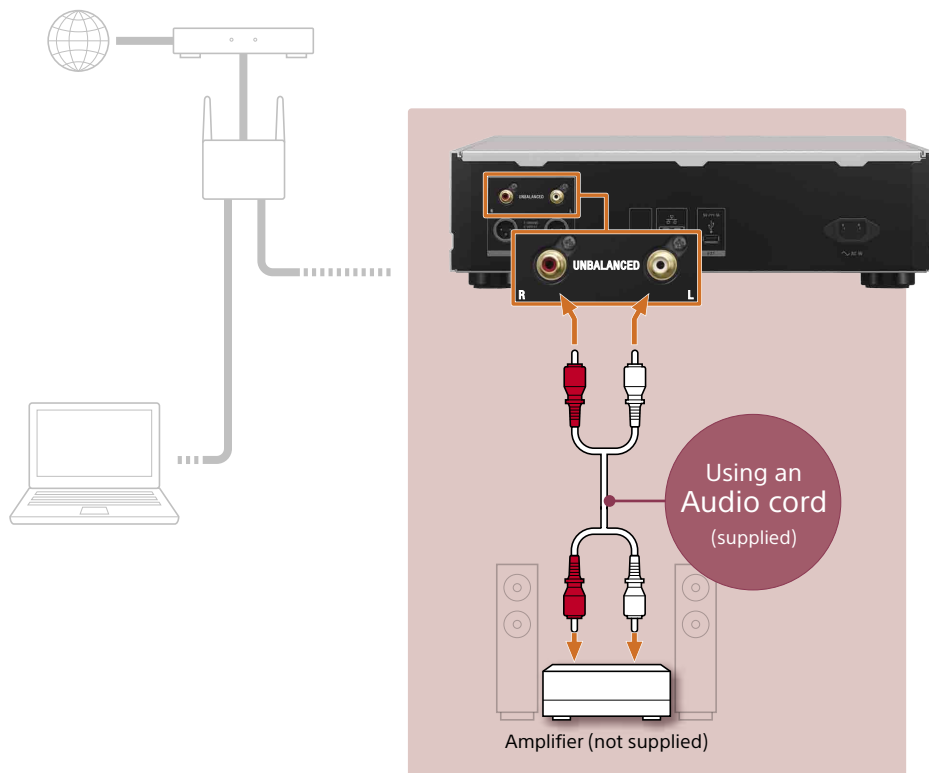
Features



You can transfer various types of audio files to the hard disk drive of the unit from a computer connected to the same network.

Storing audio files in the unit allows you to enjoy high-quality sound playback unaffected by the network environment. You can enjoy High-Resolution Audio files such as DSD (Direct Stream Digital) audio and 192 kHz/24 bit and compressed audio with more natural and expansive sound.

Prep. 1 Connecting an amplifier



Hint

You can also connect the unit to the amplifier using XLR balanced cords (not supplied).

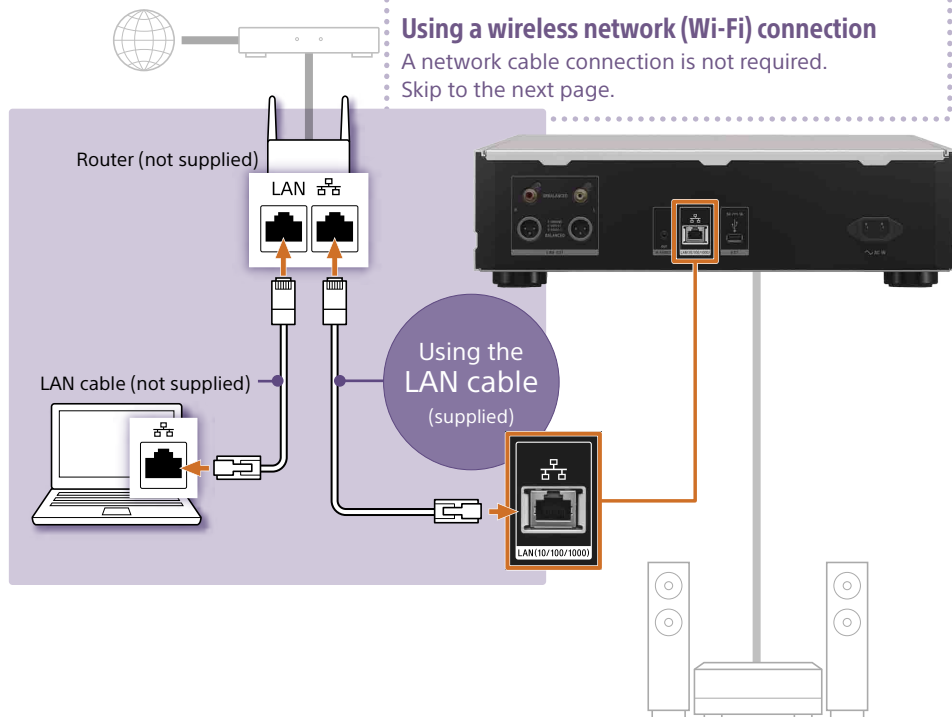
Prep. 2 Connecting to a network with a LAN cable (only when using a wired network)

When transferring large volumes of data

Using a wired network is especially recommended.
A wired network connection enables you to transfer music files more quickly.

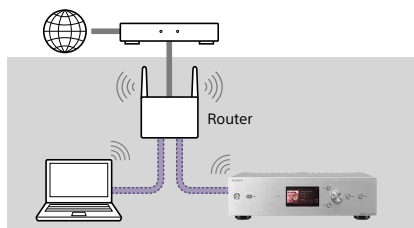
Using a wireless network (Wi-Fi) connection

A network cable connection is not required.
Skip to the next page.

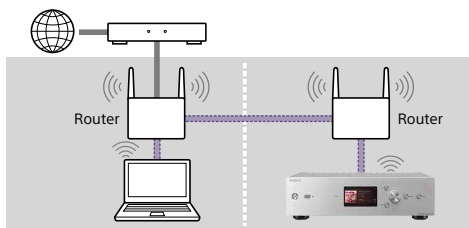


Hint

You need to connect the unit to the same network (router) as your computer.

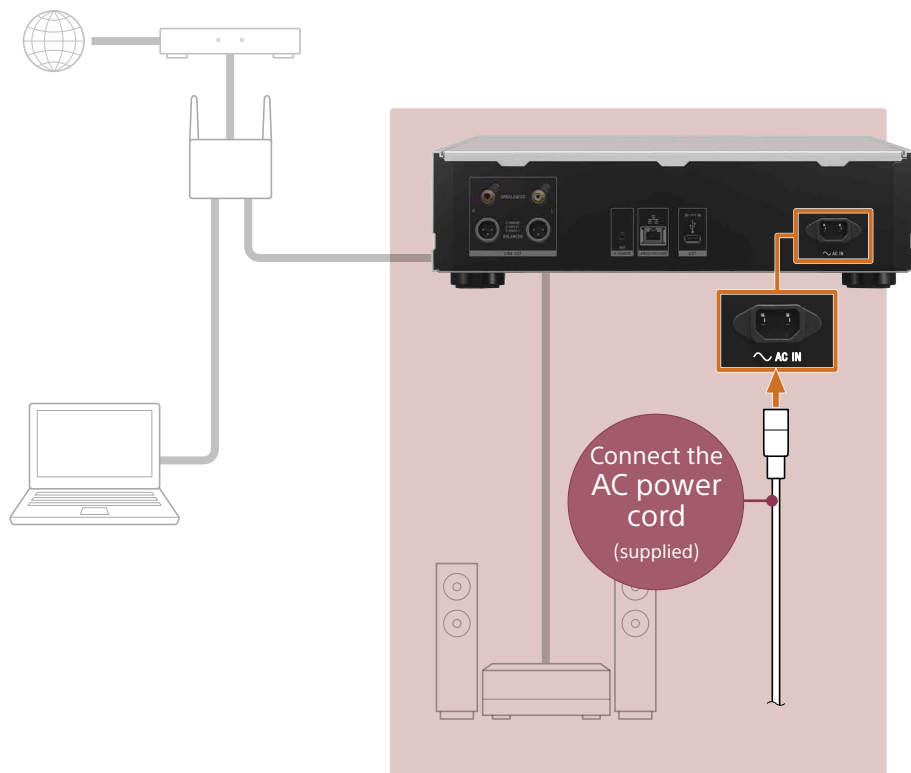


Connected to the same router

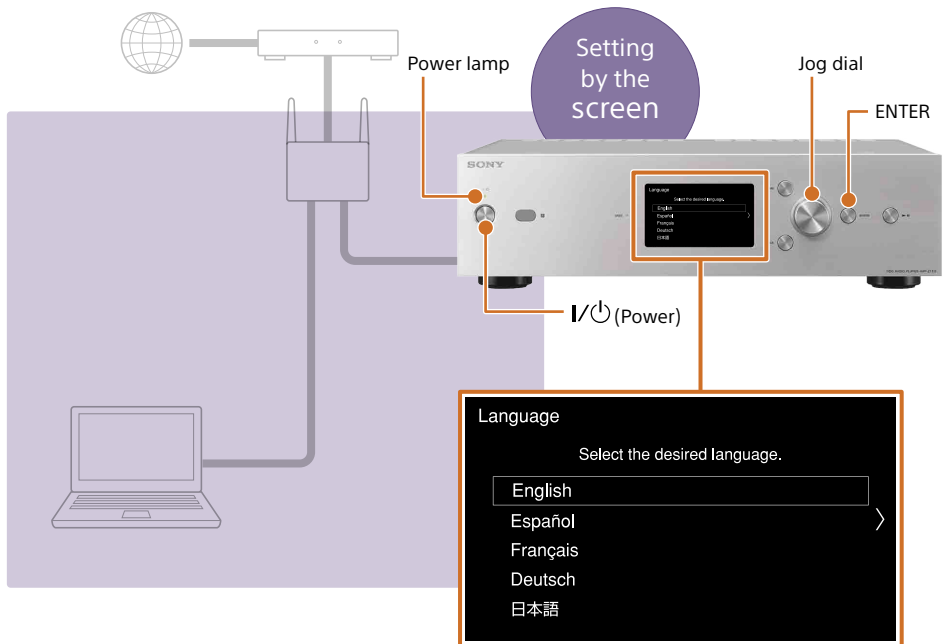


Connected to different routers

Prep. 3 Plugging in the unit



Prep. 4 Configuring the initial settings of the unit



- 1 Press I/⏻ to turn on the unit.
The power lamp lights up in green.
- 2 Turn the jog dial to select the item following the instructions on the screen, and then press ENTER.

Configure the initial settings in the following order:

- Language
- Network Standby Settings
- Internet Settings
 - Wired Setup
 - Wireless Setup

If you are not sure what to do in the [Wireless Setup] screen, check the **example of a wireless network connection** on the next page.

Example of a wireless network connection

This is a sample of settings when you select [Wireless Setup] for the [Internet Settings] in step 2 on the previous page.

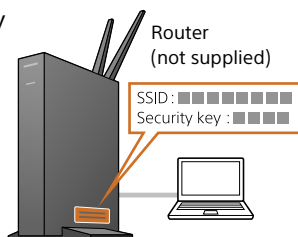
- 1 Ready the network name (SSID) and security key of the wireless router/access point to which your computer is connected.

SSID

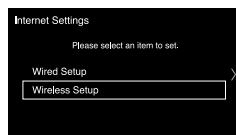
Security key

Hint

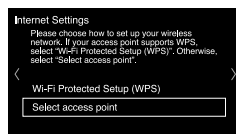
The name for the "security key (password)" of a router differs depend on its manufacturer. ("WPA key", "security key", "KEY", "WEP key", "passphrase" or "network key", etc.)



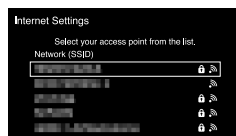
- 2 Select [Wireless Setup].



- 3 Select [Select access point].



- 4 Select the network name (SSID) found in step 1. If it does not appear in the list of available network names, select [Add a new access point].

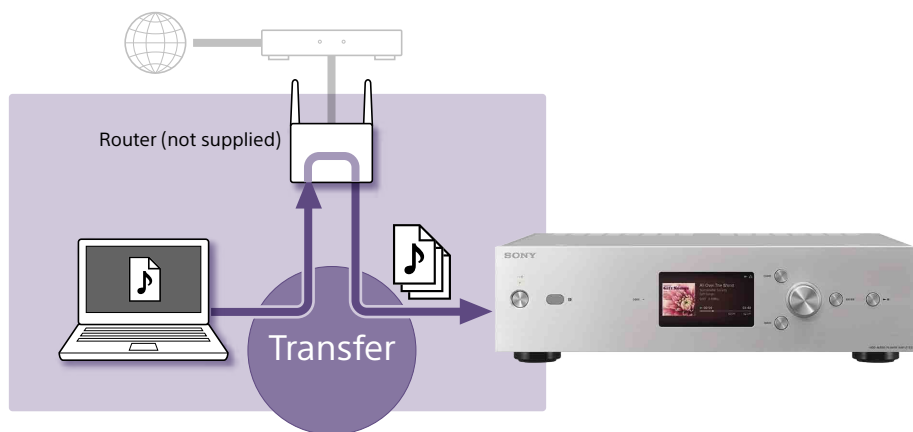


- 5 Enter the security key. Follow the instructions on the screen to complete configuration of the settings.



Prep. 5 Configuring the settings of your computer to use HAP Music Transfer

You can transfer music files managed on your computer to the unit using HAP Music Transfer. HAP Music Transfer allows you to start transferring music files to the unit automatically when new music files are added to the designated folder on your computer.



- 1 Install HAP Music Transfer on your computer from the following website:
<http://www.sony-asia.com/support>



- 2 Start HAP Music Transfer on your computer and check that the network device name of the unit appears on the top left of the display.



Key Point

If the network device name of the unit does not appear

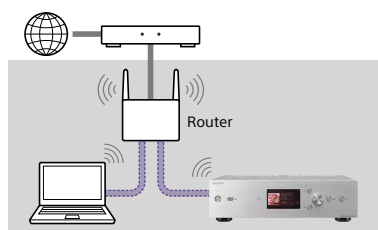
The unit and computer are not connected to the network correctly. Check the next page and make so the unit name appears.

- 3 Transfer music files to the unit using HAP Music Transfer.
For details on the operations of HAP Music Transfer, refer to the HAP Music Transfer Help.

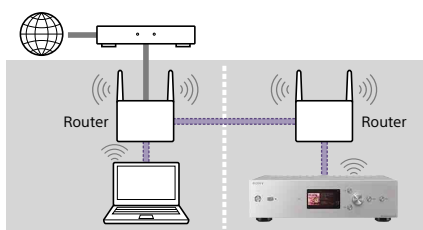
If the network device name of the unit does not appear

Cause 1

The unit and the computer are connected to different routers or servers. Connect them to the same router, and then select [Settings] - [Network Settings] - [Internet Settings] from the Home screen to set the network settings again.



✓ Connected to the same router

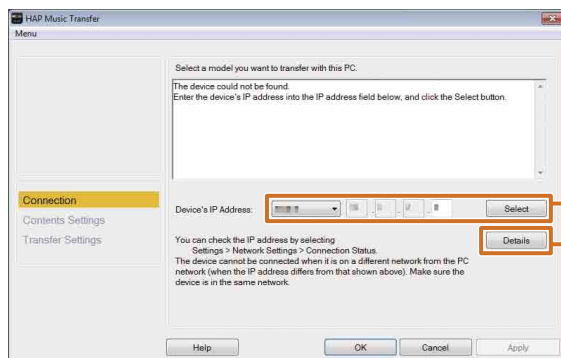


✗ Connected to different routers

Cause 2

The network device name of the unit may not appear due to reasons such as the security settings.

In this case, enter the IP address directly.



IP address input area

To check the IP address of the unit, click "Details."

Note

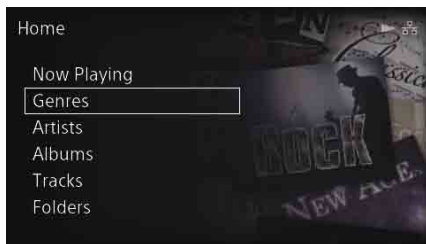
Turning off your router may change the IP address of the unit. In this case, check the IP address again.

Enjoying music

You can enjoy music transferred to the unit.




1 Press HOME.



2 Turn the jog dial to select a desired category from [Genres], [Artists], [Albums], [Tracks], [Folders] on the Home screen, and then press ENTER to enter the selection.

3 Turn the jog dial to select a desired item, and then press ENTER.

Hint

- If you want to play all tracks in a selected item, press ►|| after selecting the item.
-  is displayed while transferring, analyzing and registering. Even during the process, you can see and play back the music files registered to the unit.

Deleting music files from the unit

You can delete selected tracks, albums, or folders.

From the list screen:

Press and hold ENTER while selecting a track, album, or folder you want to delete to display the Options screen, and then select [Delete].

Note

You cannot display the Options screen if you have selected [All Albums].

From the Playback screen:

Press ENTER while playing a track you want to delete to display the Options screen, and then select [Delete].

Operating the unit from your smartphone or tablet



You can operate the unit using your smartphone or tablet by installing HDD Audio Remote, a dedicated application for smartphones and tablets.

HDD Audio Remote allows you to:

- Browse and play audio files
- Add tracks to playlists
- Edit information such as the genre, artist, album and track title of music files

Download HDD Audio Remote to your smartphone or tablet from the following websites:



- For Android devices: Google Play
- For iPhone, iPod touch, iPad: App Store

Troubleshooting



It takes a long time to transfer and register music files to the unit.

- We recommend using a wired network when you transfer large volumes of music files stored on your computer to the unit.
- When the unit is connected to a computer through a wired network, file transfers will take the following time (as a rough guide):
 - 10 FLAC (44.1 kHz/16 bits) files: approximately 5 minutes
 - 3,000 FLAC (44.1 kHz/16 bits) files: approximately one day

remains on the screen.

- Even after transferring the music files,  is displayed while analyzing the music files.
- You can turn off the power even while analyzing. The next time you turn on the power, the analysis will continue.
-  is displayed while transferring, analyzing and registering music files. Even during the process, you can see and play back the music files registered to the unit.

appears.

 appears when the correct music information cannot be obtained from the Gracenote server. This does not affect playback of music. The unit accesses the Gracenote server to obtain music information when the power is turned on/off. When all of the music files are registered to the unit, the  disappears.

The track name or genre are displayed correctly in the music file management software, but not on the unit.

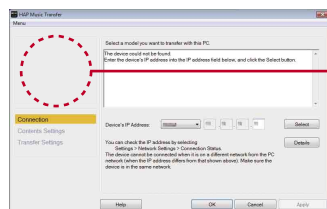
The music information is registered in the music file management software on your computer, but may not be registered to the music file itself.

Use HDD Audio Remote to edit the music information. For details, check the HDD Audio Remote Help. You can display the Help from the home menu of HDD Audio Remote.

You cannot connect to the network by a wireless network or the network connection is unstable.

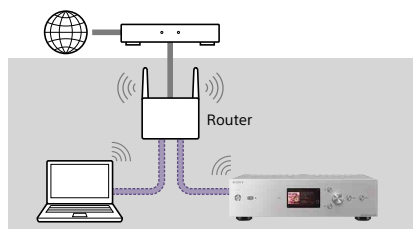
- Turn off the unit, and then turn it back on.
- Turn off the the wireless router/access point, and then turn it back on.
- If the problem still persists, try to connect with a wired network (page 6). When finished connecting, select wired network connection from [Settings] - [Network Settings] in the Home screen.
- If the problem is not solved, check the HDD Audio Remote Help. You can display the Help from the home menu of HDD Audio Remote.

The network device name of the unit does not appear in HAP Music Transfer.

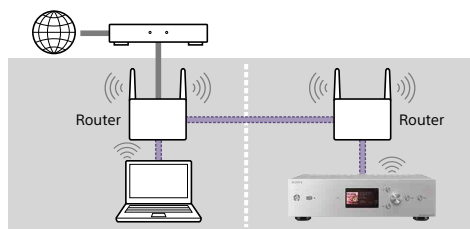


The network device name of the unit does not appear.

- Make sure the unit is turned on.
- Quit HAP Music Transfer, and then restart it.
- When the network connected to is switched, it takes a while before the unit name appears.
- The unit and the computer may be connected to different routers. Make sure they are connected to the same router, and then select [Settings] - [Network Settings] from the Home screen to reset the network settings.



Connected to the same router



Connected to different routers

The unit name may not appear due to the security setting of the computer.

Directly enter the IP address, which indicates the location of the unit. For details, see "Cause 2" in "If the network device name of the unit does not appear" (page 11).

If the problem is not solved, check the HAP Music Transfer Help. You can display the Help from the screen of HAP Music Transfer.

The Help Guide provides more information on the following topics:
(See the back cover for how to access Help Guide.)

- Network settings of the unit
- Listening to Internet radio programs
- Using the DSEE function
- Troubleshooting



Quick Start Guide



Help Guide

关于手册



快速入门指南（本手册）

介绍设置本机以自动从电脑传输音乐文件并进行播放的步骤。

有关本机的更多信息，请访问以下网站。



帮助指南（在线手册）

提供有关如何使用本机的信息。

- 还包含如何使用各种功能（如DSEE）的详细信息。
- 参阅“故障排除”章节，或者按关键字搜索，快速访问最新信息及其他需要的信息。

HAP-Z1ES:

<http://rd1.sony.net/help/ha/hapz1es/>

HAP Music Transfer/HDD Audio Remote:

<http://rd1.sony.net/help/ha/hap1/>

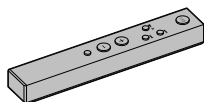


参考指南

包括规格信息和有关如何使用本机的注意事项。

附带的附件

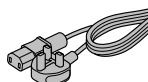
☐ 遥控器（1）



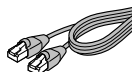
☐ R03（7号）电池（2）



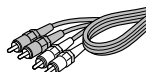
☐ AC电源线（1）



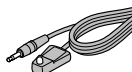
☐ LAN电缆（1）



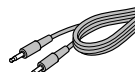
☐ 音频线（1）



☐ 红外线增强器（1）



☐ 单声道迷你插头电缆（1）



目录

功能	4
----	---

准备1 连接放大器	5
-----------	---

准备2 使用LAN电缆连接网络	6
-----------------	---

准备3 为本机插上电源	7
-------------	---

准备4 配置本机的初始设置	8
---------------	---

准备5 配置电脑设置以使用HAP Music Transfer	10
---------------------------------	----

欣赏音乐	12
------	----

故障排除	14
------	----

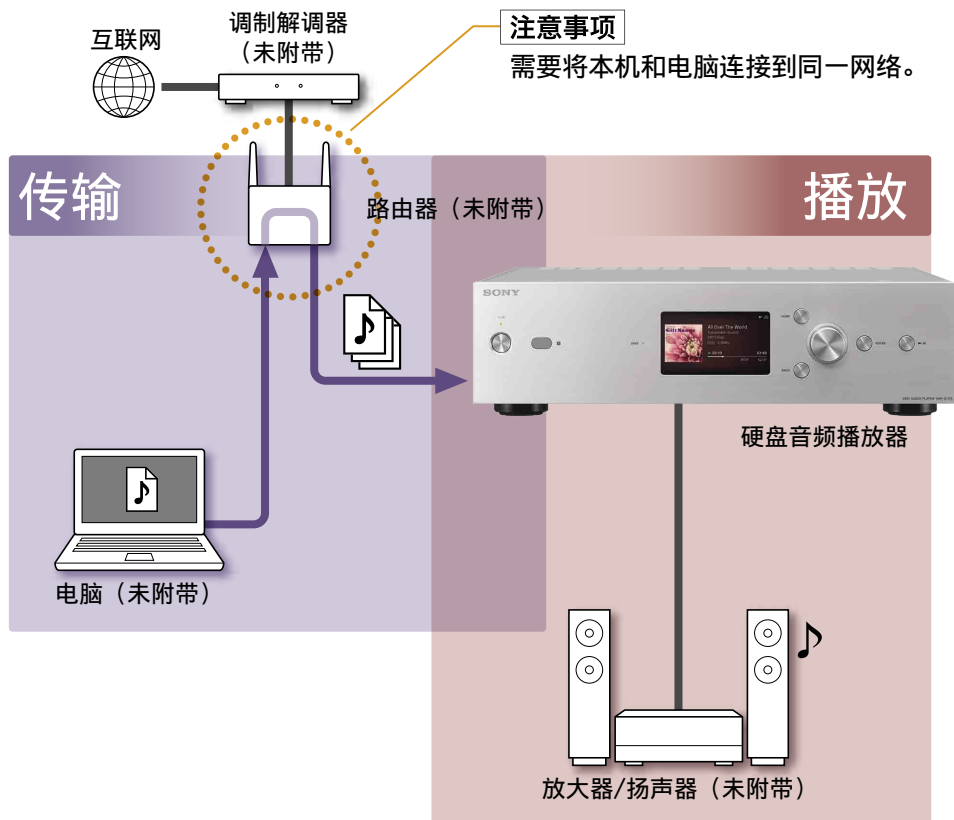
有关使用方法的更多详情 ————— 请参阅上一页介绍的
帮助指南（在线手册）。

CS

商标

- iPhone、iPad和iPod touch是Apple Inc.在美国和其他国家/地区的注册商标。App Store是Apple Inc.的服务商标。
- Google Play™、Android™及其相应徽标是Google Inc.的商标。

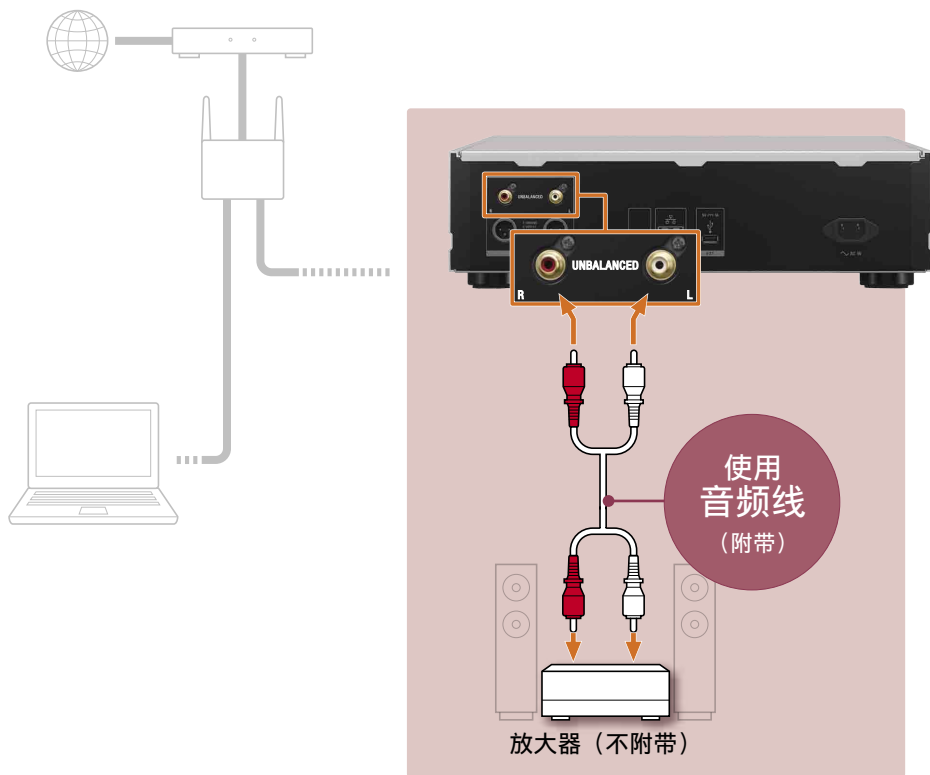
功能



可以将各类音频文件从连接到同一网络的电脑传输到本机的硬盘驱动器。

通过将音频文件存储在本机中，可以让您不受网络环境的影响的情况下，享受优质的音频资源。可以欣赏声音更为自然开阔的高分辨率音频文件，如DSD（直接比特流数码）音频和192千赫/24位压缩音频。

准备 1 连接放大器



提示

也可以使用XLR均衡线（未附带）将本机连接到放大器。

准备 2 使用LAN电缆连接网络

(仅限使用有线网络时)

传输大量数据时

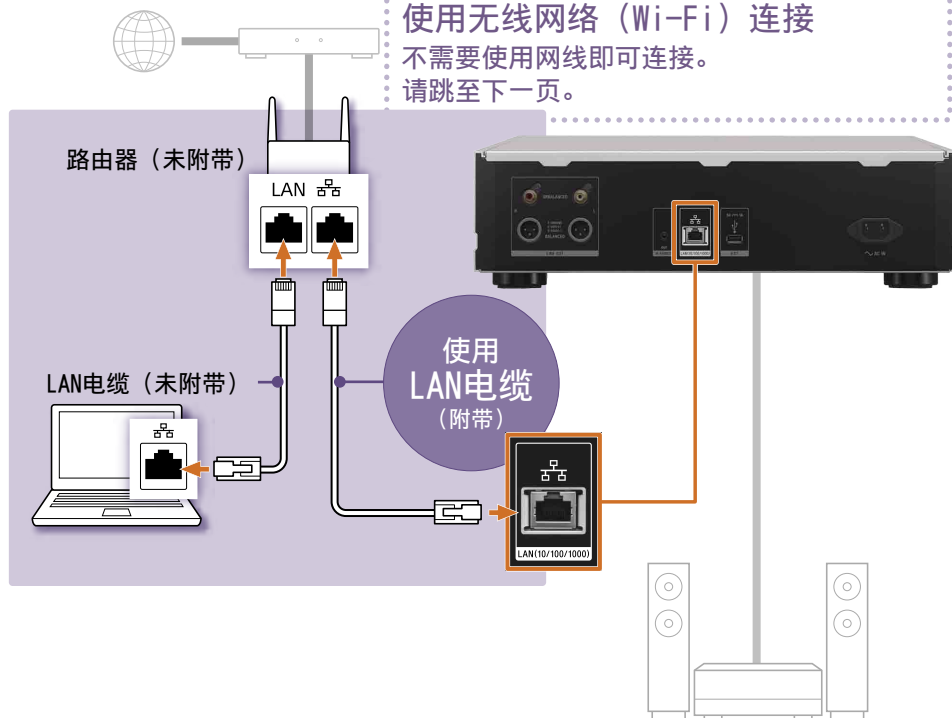
特别推荐使用有线网络。

有线网络连接能更快地传输音乐文件。

使用无线网络 (Wi-Fi) 连接

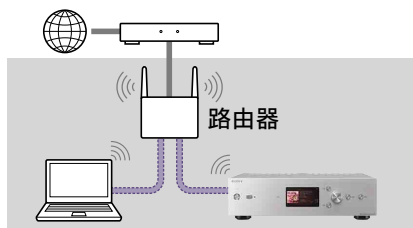
不需要使用网线即可连接。

请跳至下一页。

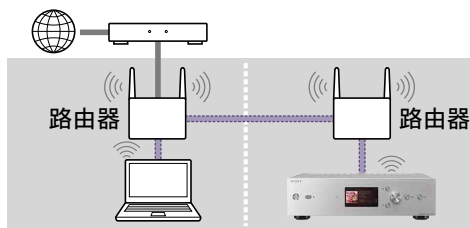


提示

需要将本机和电脑连接到同一网络 (路由器)。

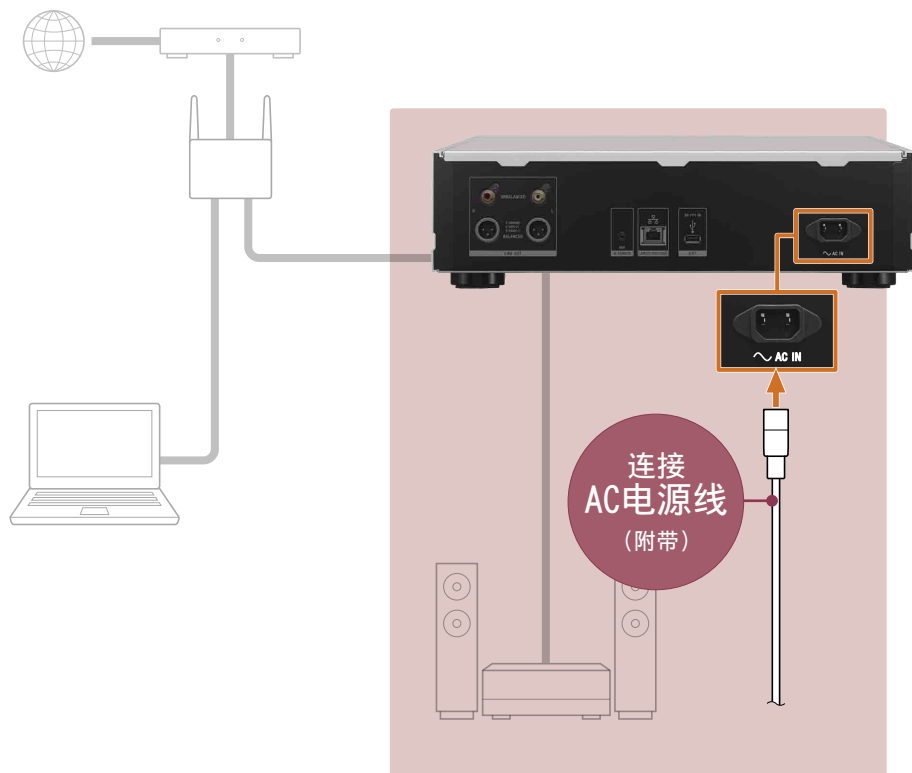


✓ 连接到同一路由器

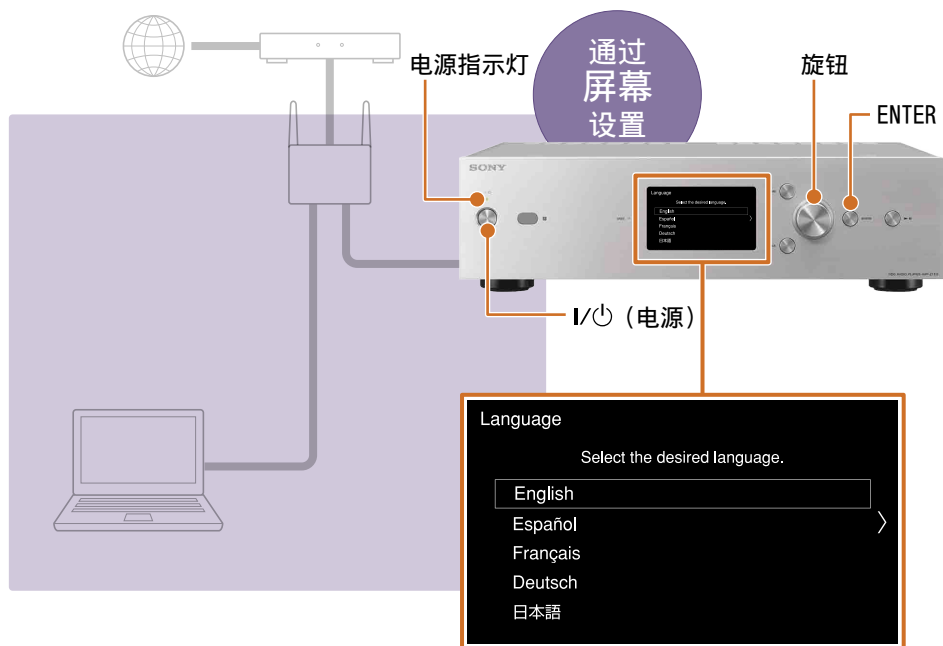


✗ 连接到不同路由器

准备 3 为本机插上电源



准备 4 配置本机的初始设置



1 按下I/O开启本机。

电源指示灯以绿色点亮。

2 按照屏幕上的说明，转动旋钮选择项目，然后按下ENTER。

请按照以下顺序配置初始设置：

- 语言
- 网络待机设置
- 网络设置
 - 有线设置
 - 无线设置

如果您不确定在[Wireless Setup]屏幕中该如何操作，请查看下一页中的[无线网络连接示例](#)。

无线网络连接示例

本例展示的是在上一页的第2步中选择[Wireless Setup]作为[Internet Settings]时的设置。

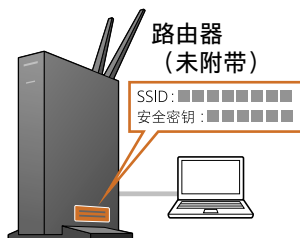
- 1 准备好电脑所连接的无线路由器/接入点的网络名称（SSID）和安全密钥。

SSID _____

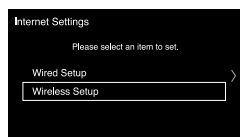
安全密钥 _____

提示

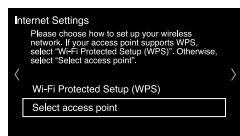
用于指示路由器的“安全密钥（密码）”的名称会因制造商而异。
（“WPA密钥”、“安全密钥”、“密钥”、“WEP密钥”、“密码”或“网络密钥”等）



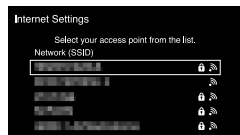
- 2 选择[Wireless Setup]。



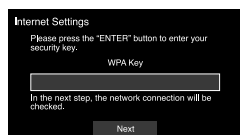
- 3 选择[Select access point]。



- 4 选择在第1步中找到的网络名称（SSID）。如果它未显示在可用网络名称列表中，请选择[Add a new access point]。

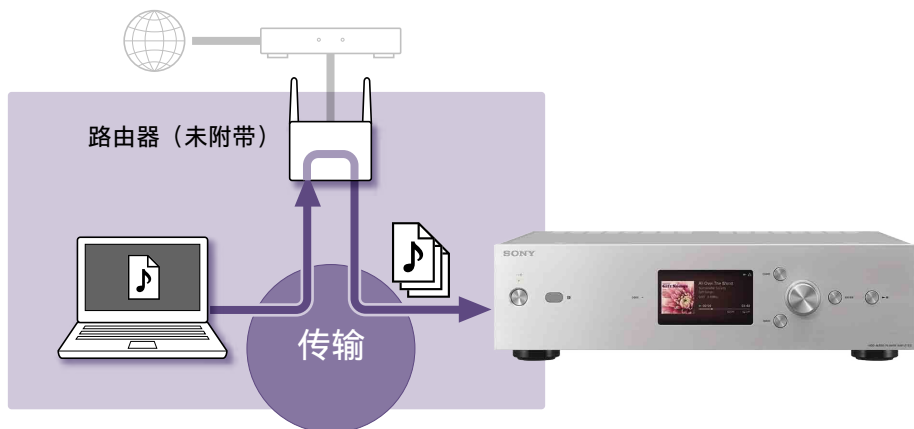


- 5 输入安全密钥。
请按照屏幕上的说明完成设置配置。



准备 5 配置电脑设置以使用HAP Music Transfer

可以使用HAP Music Transfer将电脑上管理的音乐文件传输到本机。HAP Music Transfer可以在有新音乐文件添加到电脑上的指定文件夹时，自动开始将音乐文件传输到本机。



- 1 通过以下网站在电脑上安装HAP Music Transfer:
<http://www.sony-asia.com/support>



- 2 在电脑上启动HAP Music Transfer，然后检查本机的网络设备名称是否已显示在显示屏的左上角。



注意事项

如果未显示本机的网络设备名称

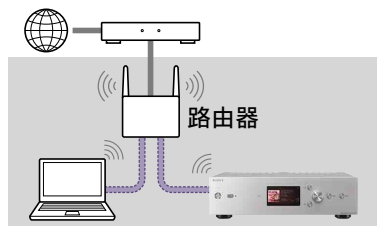
本机和电脑未正确连接到网络。请查看下一页中的内容以使本机名称显示在左上角。

- 3 使用HAP Music Transfer将音乐文件传输到本机。
有关HAP Music Transfer的操作详情，请参阅HAP Music Transfer的帮助。

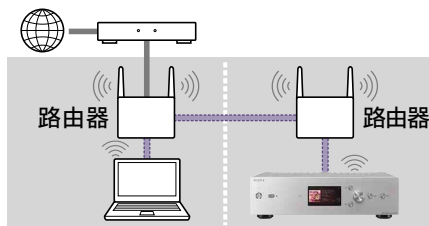
如果未显示本机的网络设备名称

原因 1

本机和电脑连接到了不同的路由器或服务器。请将它们连接到同一路由器，然后从主屏幕中选择[Settings] - [Network Settings] - [Internet Settings]，以便再次设置网络设置。



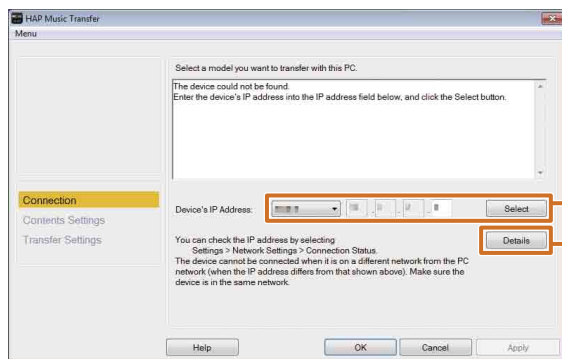
✓ 连接到同一路由器



⊘ 连接到不同路由器

原因 2

本机的网络设备名称会因多种原因（如安全设置）而无法显示。在这种情况下，请直接输入IP地址。



IP地址输入区域
要检查本机的IP地址，请单击“Details”。

注意

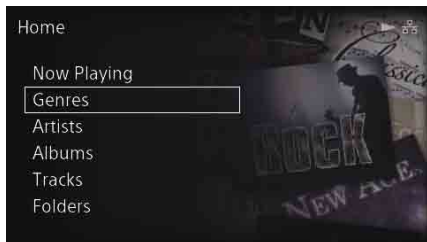
关闭路由器可能会改变本机的IP地址。在这种情况下，请再次检查IP地址。

欣赏音乐

可以欣赏已经传输到本机的音乐。



1 按下HOME。



2 转动旋钮以在主屏幕上的[Genres]、[Artists]、[Albums]、[Tracks]、[Folders]中选择所需的类别，然后按下ENTER以进入所选的项目。

3 转动旋钮以选择所需的项目，然后按下ENTER。

提示

- 如果想要播放所选项目中的所有曲目，请在选择该项目后按下▶||。
- Ⓜ会在传输、分析和注册音乐文件时显示。即使在此期间，您也可以查看和播放已注册到本机中的音乐文件。

从本机中删除音乐文件

可以删除选中的曲目、专辑或文件夹。

在列表屏幕中：

在选择想要删除的曲目、专辑或文件夹的同时按住ENTER，以便显示选项屏幕，然后选择[Delete]。

注意

如果选择了[All Albums]，则无法显示选项屏幕。

在播放屏幕中：

在播放想要删除的曲目的同时按下ENTER，以便显示选项屏幕，然后选择[Delete]。

在智能手机或平板电脑上操作本机



可以安装智能手机和平板电脑的专用应用程序HDD Audio Remote，以便使用智能手机或平板电脑操作本机。

可以使用HDD Audio Remote：

- 浏览和播放音频文件
- 将曲目添加到播放列表中
- 编辑各种信息，如音乐文件的类型、艺术家、专辑和曲目标题


请从以下网站将HDD Audio Remote下载到您的智能手机或平板电脑上：

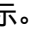

- 对于Android设备：Google Play
- 对于iPhone、iPod touch、iPad：App Store

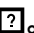
故障排除



向本机传输和注册音乐文件需要较长时间。

- 如果您将存储在电脑上的大量音乐文件传输到本机，我们建议您使用有线网络。
- 当本机通过有线网络连接电脑时，文件传输所需的时间如下所示（大致的参考时间）：
 - 10个FLAC（44.1千赫/16位）文件：约5分钟
 - 3000个FLAC（44.1千赫/16位）文件：约一天

屏幕上一直显示.

- 即使音乐文件的传输已经完成，在分析音乐文件时仍会显示。
- 即使正在进行分析，您仍可关闭电源。下次打开电源时，分析将会继续进行。
- 会在传输、分析和注册音乐文件时显示。即使在此期间，您也可以查看和播放已注册到本机中的音乐文件。

显示.

当无法从Gracenote服务器获取正确的音乐信息时，就会显示。这不会影响音乐的播放。本机会在打开/关闭电源时访问Gracenote服务器，以获取音乐信息。在所有音乐文件都注册到本机后，就会消失。

音乐文件管理软件中可正确地显示曲目名称或类型，但在本机中却不行。

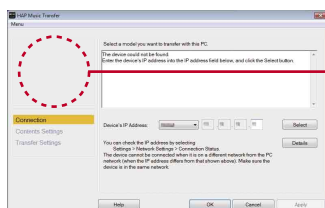
音乐信息会注册到电脑上的音乐文件管理软件中，但可能不会注册到音乐文件本身。

请使用HDD Audio Remote编辑音乐信息。有关详情，请参阅HDD Audio Remote的帮助。可以通过HDD Audio Remote的主菜单显示“Help”。

无法通过无线方式连接至网络或网络连接不稳定。

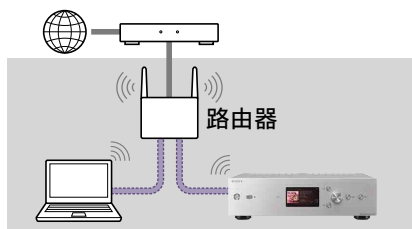
- 关闭本机，然后重新打开。
- 关闭无线路由器/接入点，然后重新打开。
- 如果问题仍然存在，请尝试通过有线网络连接（第6页）。连接完成后，请从主屏幕上的[Settings] - [Network Settings]中选择有线网络连接。
- 如果问题未解决，请参阅HDD Audio Remote的帮助。可以通过HDD Audio Remote的主菜单显示“Help”。

本机的网络设备名称未在HAP Music Transfer中显示。

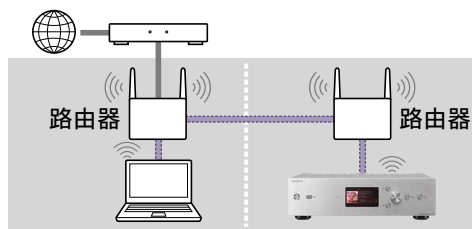


本机的网络设备名称未显示。

- 确保本机已打开。
- 退出HAP Music Transfer，然后重新启动。
- 切换所连接的网络后，需要稍等片刻才会显示本机名称。
- 本机和电脑可能连接到了不同的路由器。确保它们已连接到同一路由器，然后在主屏幕中选择[Settings] - [Network Settings]，以便重设网络设置。



✓ 连接到同一路由器



✗ 连接到不同路由器

可能由于电脑的安全设置，导致本机名称没有显示。

请直接输入可指明本机所在位置的IP地址。有关详情，请参阅“如果未显示本机的网络设备名称”（第11页）中的“原因 2”。

如果问题未解决，请参阅HAP Music Transfer的帮助。可以通过HAP Music Transfer的屏幕显示“Help”。

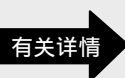
《帮助指南》提供有关以下主题的更多信息：

（有关如何访问《帮助指南》，请参见封底。）

- 本机的网络设置
- 聆听互联网广播节目
- 使用DSEE功能
- 故障排除



快速入门指南



帮助指南

Visit the website below for more information on how to use the unit:

有关如何使用本机的更多信息，请访问以下网站：

<http://rd1.sony.net/help/ha/hapz1es/>



* 4 4 7 2 8 4 7 7 1 * (1)