



MUSICflow H7 / H5

SMART Hi-Fi AUDIO
Wireless Multi-room

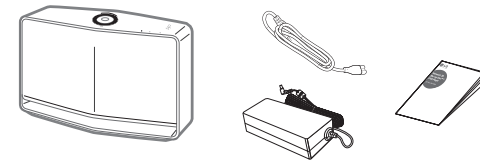
Model : NP8740 (H7)
NP8540 (H5)



ENGLISH | SIMPLE MANUAL

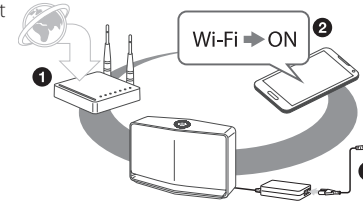
To view the instructions of advanced features, visit <http://www.lg.com> and then download Owner's Manual. Some of the content in this manual may differ from your speaker.

Step 1 Unpacking



Step 2 Getting Started

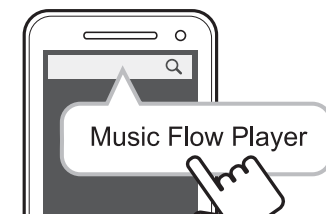
- 1 Make sure that wireless network environment using a router is installed at your home.
- 2 Connect your smart device to your home network.
- 3 Connect the speaker to the power supply with the supplied AC adapter.



- ! The wireless router should be connected to the internet.
- Wireless signal interference may lead to disconnection of network or stopping playback.
- Depending on the speed of your network, playback of online contents may not work well.

Step 3 Installing "Music Flow Player" App

Download "Music Flow Player" on the iTunes store or Google Play Store.



- A** Type "Music Flow Player" in the search bar and tap "Search".



- B** Scan the QR code using the scanning application.

- ! Depending on the device, "Music Flow Player" app may not work.
- Music Flow Player app will be available in version of the software as follow;
Android O/S : Ver 2.3.3 (or later) iOS O/S : Ver 5.1.1 (or later)

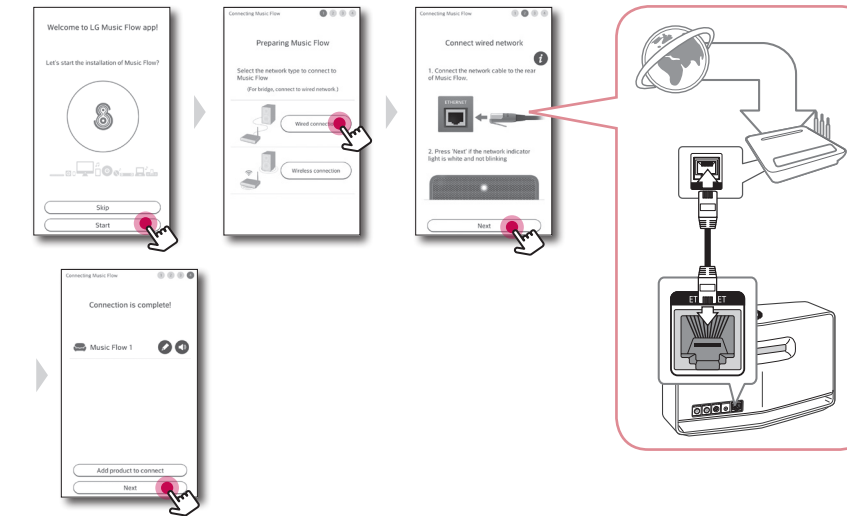
Tip. Media server software allows you to access audio files stored in media server and enjoy them on your speaker via home networking. On www.lg.com website, type model name (NP8740 or NP8540) in the search bar and find media server software on support tab.

- Windows : Music Flow PC Software
- Mac OS : Nero MediaHome 4 Essentials

Step 4 Network Connection

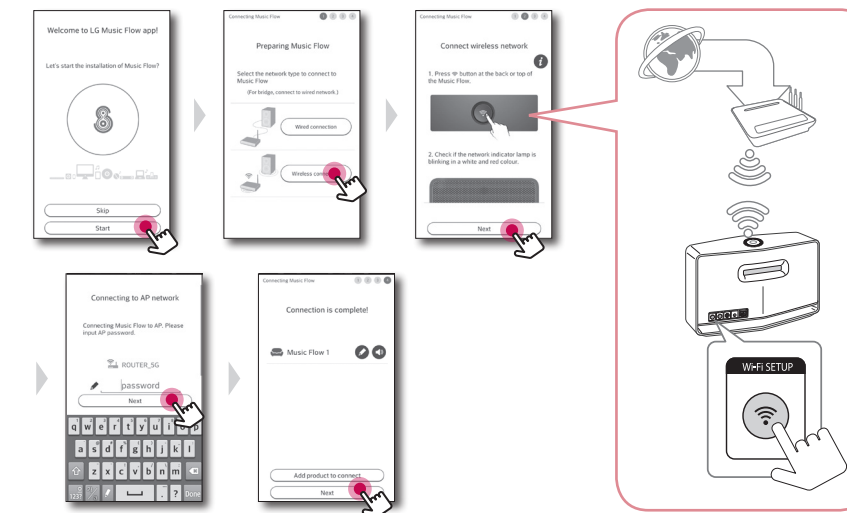
Option 1. Wired Connection

On Music Flow Player app, select [Wired connection] and follow the directions on screen.



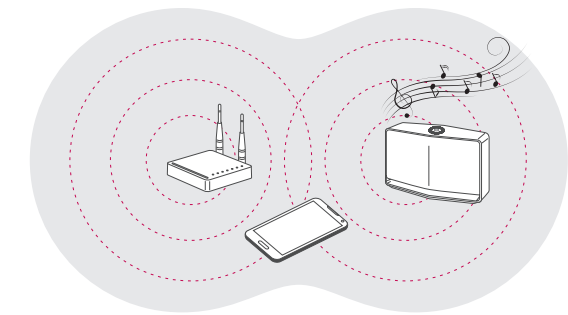
Option 2. Wireless Connection

On Music Flow Player app, select [Wireless connection] and follow the directions on screen.

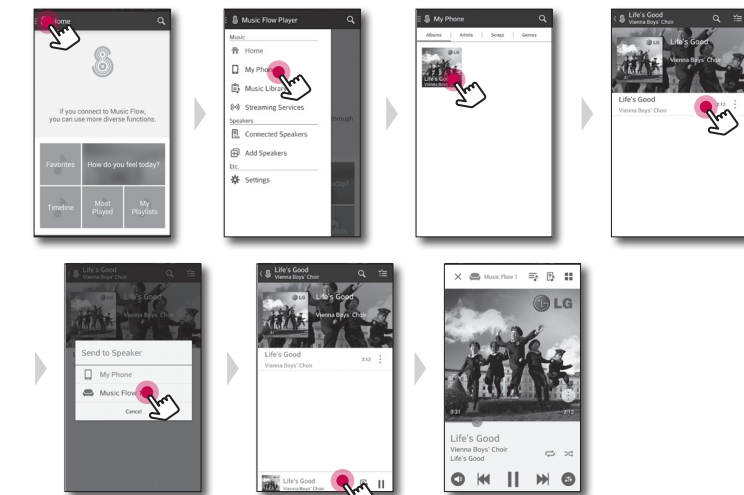


- ! You need to turn the speaker's power off and on again if you restart the router.
- You need to perform a factory set and setup the network connection for speaker, if you install new router.

Step 5 Music Playback



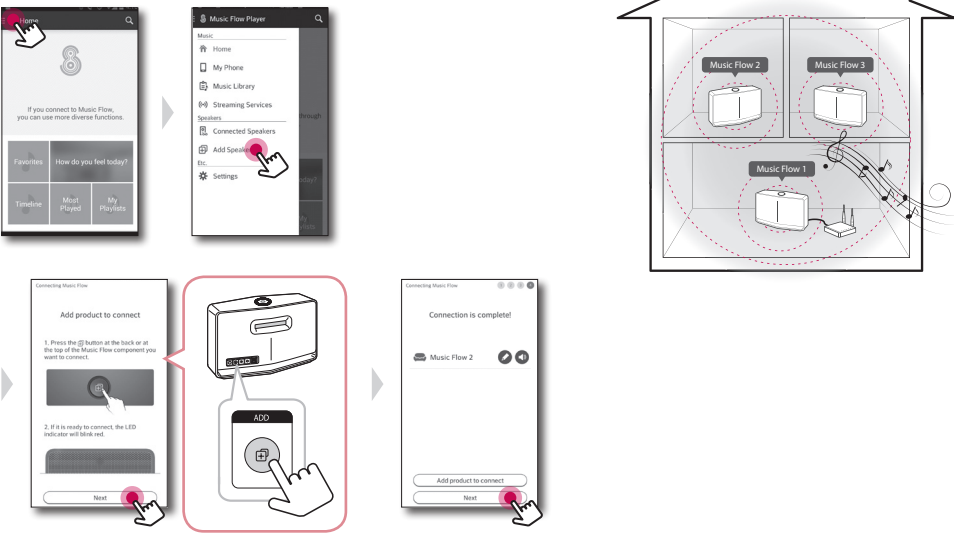
Playing a song on this device



Group Playback (Optional)

Any number of speakers can be grouped together to play the same music in synchrony.

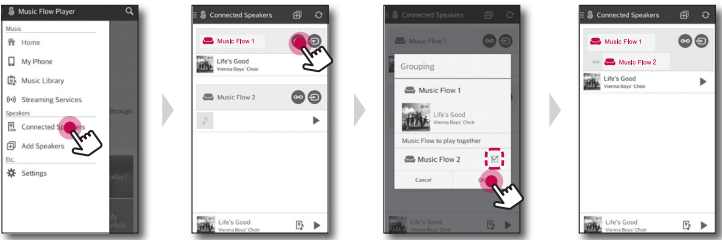
1. Adding another LG SMART Hi-Fi AUDIO



- When you enjoy the group playback, at least one speaker or LG R1 bridge (optional) should be connected by LAN cable.
- If the speakers are connected only wirelessly, disconnect all the wireless connections and reconnect them after connecting one wired.

2. Grouping

On Music Flow Player app, select [Connected Speakers] and follow the directions on screen.



- If the speakers are not grouped, you can enjoy different music on each speaker.
- For smooth group playback, it is recommended to select the speaker connected by LAN cable as a master speaker.
- The weak signal because of the long distance between speakers or wireless router and signal interference may cause abnormal playback.

Bluetooth Connection

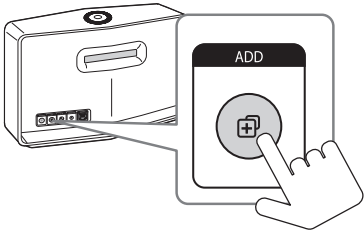
- Select the Bluetooth mode with **BT/I/F** button on the speaker.
- On your Bluetooth device, make sure that Bluetooth is on and select "Music Flow H5 (or H7) (XX.XX)"
- Play music on your Bluetooth device.

NFC for Easy Pairing (Android Only)

You can pair simply and easily by tagging on the **NFC** mark.

- When you are enjoying the music with Music Flow Player app, seamless playback is activated instead of Bluetooth pairing.

Reset the Speaker



Initializing the network settings

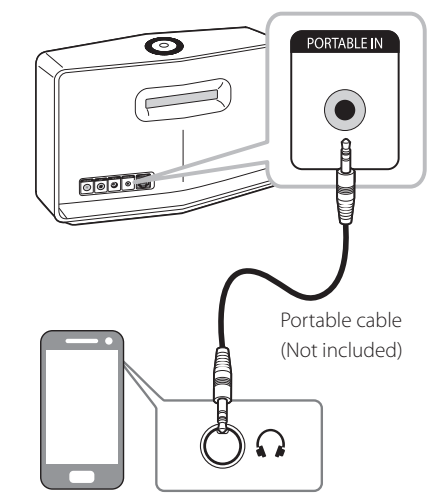
Press and hold **ADD** button until you hear the beep sound once. Then all wireless network ports are deactivated and delete the stored wireless network information.

Factory Set

Press and hold **ADD** button until you hear the beep sound twice.

- Some of the content in this manual may differ from Music Flow Player app depending on the application's version.

External Device Connection

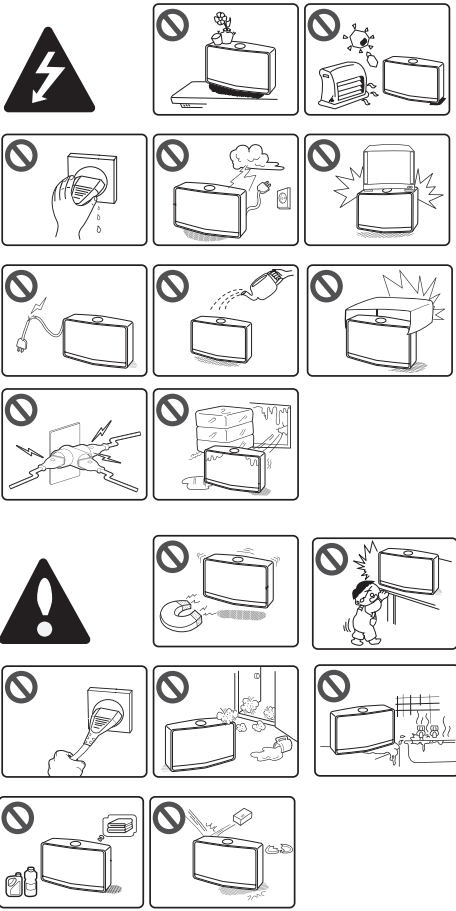


Specification

| | |
|------------------------|---|
| Power Supply | 18 V 2.67 A (AC adapter : DA-48A18) |
| Power consumption | NP8740 : 12 W NP8540 : 10 W Networked standby : 5.4 W (If all network ports are activated.) |
| Dimensions (W x H x D) | NP8740 : Approx. 370 x 232 x 110 mm without foot NP8540 : Approx. 340 x 207 x 88 mm without foot |
| Net Weight (Approx.) | NP8740 : 4.1 kg NP8540 : 3.25 kg |

Design and specifications are subject to change without notice.

Safety Information



CAUTION
RISK OF ELECTRIC SHOCK
DO NOT OPEN

CAUTION: TO REDUCE THE RISK OF ELECTRIC SHOCK DO NOT REMOVE COVER (OR BACK) NO USER-SERVICEABLE PARTS INSIDE REFER SERVICING TO QUALIFIED SERVICE PERSONNEL.

This lightning flash with arrowhead symbol within an equilateral triangle is intended to alert the user to the presence of uninsulated dangerous voltage within the product's enclosure that may be of sufficient magnitude to constitute a risk of electric shock to persons.

The exclamation point within an equilateral triangle is intended to alert the user to the presence of important operating and maintenance (servicing) instructions in the literature accompanying the product.

WARNING: TO PREVENT FIRE OR ELECTRIC SHOCK HAZARD, DO NOT EXPOSE THIS PRODUCT TO RAIN OR MOISTURE.

WARNING: Do not install this equipment in a confined space such as a book case or similar unit.

CAUTION: The apparatus shall not be exposed to water (dripping or splashing) and no objects filled with liquids, such as vases, shall be placed on the apparatus.

CAUTION: Do not block any ventilation openings. Install in accordance with the manufacturer's instructions. Slots and openings in the cabinet are provided for ventilation and to ensure reliable operation of the product and to protect it from over heating. The openings shall be never be blocked by placing the product on a bed, sofa, rug or other similar surface. This product shall not be placed in a built-in installation such as a bookcase or rack unless proper ventilation is provided or the manufacturer's instruction has been adhered to.

CAUTION concerning the Power Cord
The Power Plug is the disconnecting device. In case of an emergency, the Power Plug must remain readily accessible.

NOTICE: For safety marking information including product identification and supply ratings, please refer to the main label on the bottom or rear of the apparatus.

CAUTION : Only use the AC adapter supplied with this device. Do not use a power supply from another device or manufacturer. Using any other power cable or power supply may cause damage to the device and void your warranty.

NOTE