

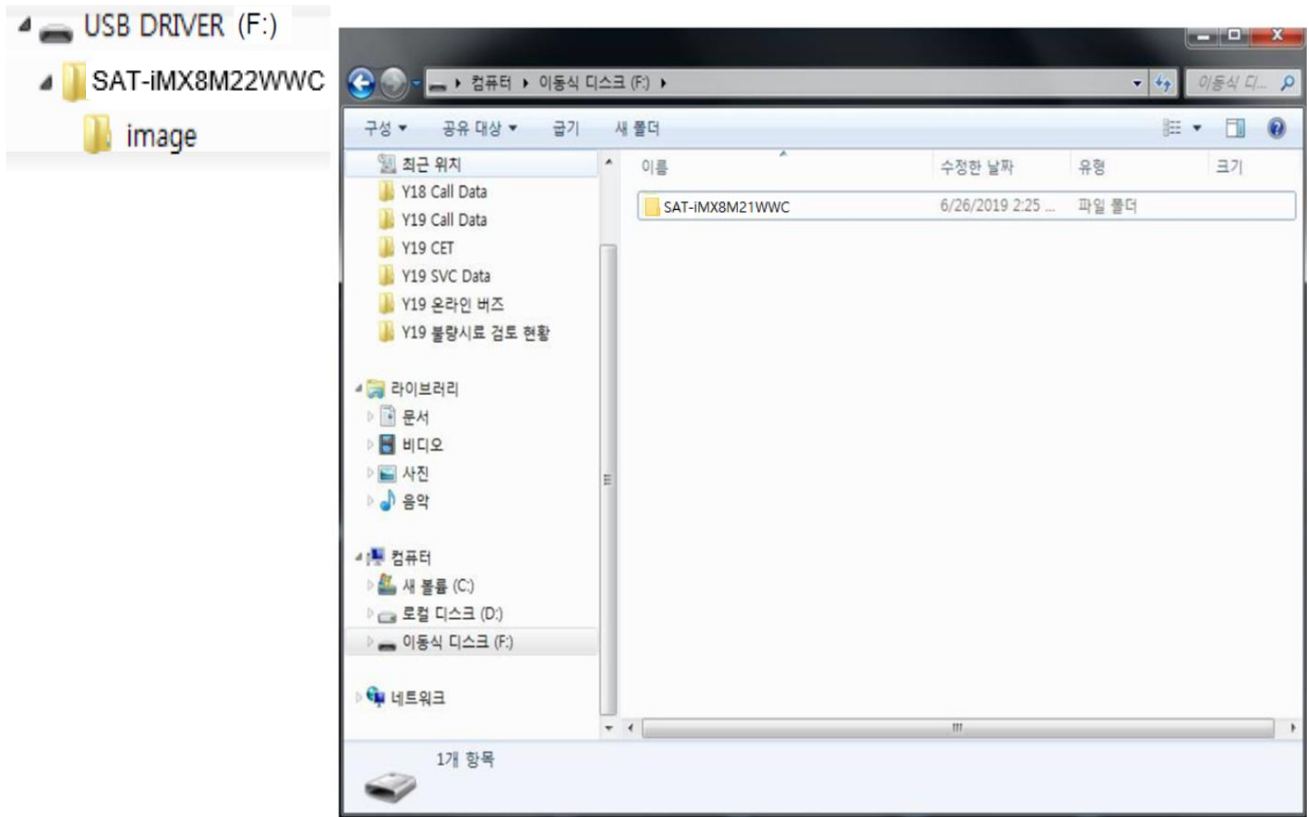
F/W Upgrade Guide

SAMSUNG

Samsung Electronics

Step1. How to prepare the USB Memory Drive

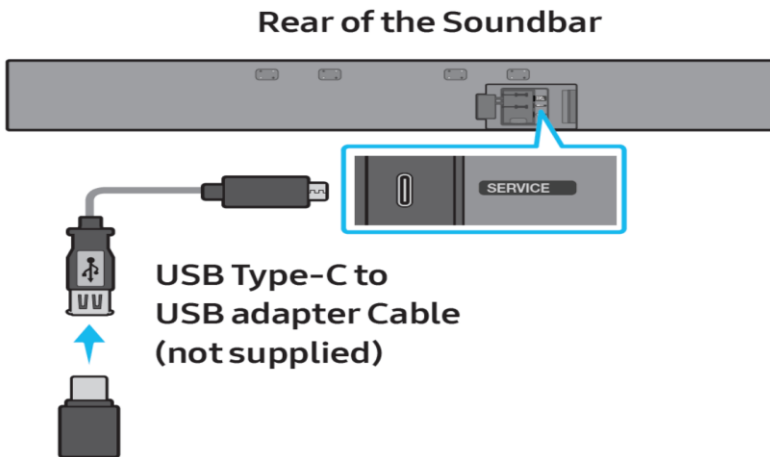
1. Download the firmware file from Samsung.com into your computer.
File Name : **SAT-iMX8M22WWC_10xx.x_USB.zip**
2. Connect the a USB Memory Drive to the USB port of your PC.
3. Unzip the file and copy extracted folder “**SAT-iMX8M22WWC.zip**” to the root directory of your USB memory drive
4. Confirm that a folder containing the firmware files has been added to the USB memory drive.
5. Confirm that USB Drive has a folder named “**SAT-iMX8M22WWC.zip**” in the root directory.



6. Safely disconnect the USB memory drive by clicking in ‘**Safely Remove**’ in Task Bar.

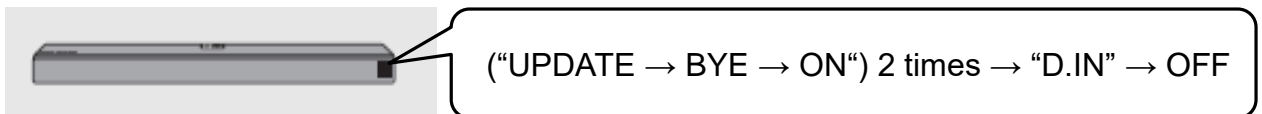
Step2. How to upgrade the Firmware by USB

- 1) Turn on the Soundbar and insert the USB drive into the SERVICE port located on the rear of the main unit. The software will begin to update automatically in less than one minute.



- 2) A sequence of “UPDATE” → “BYE” → “ON” will appear on the display 2 times. It would take around 5 minutes

- 3) After the 2 cycles are complete, the Soundbar will restart and last source used will appear on the display for about 20 seconds and then it will go off



※ Cycle and duration of update may differ by models

※ **Important**

. Please DO NOT turn off the power or remove the USB while the update.