

RF23DB9700QL

SAMSUNG

Bespoke Counter-Depth 4-Door Flex™ Refrigerator with Beverage Zone™ and Auto Open Door



Signature Features

Colour Customization

Customize the design of your refrigerator with changeable door panels. Choose from a variety of colours and two finishes to create a space that fits your style.

Beverage Zone™

Enjoy a fridge within your fridge with two temperature settings, perfect for beverages, desserts, and more. Choose from an internal dispenser or a built-in AutoFill Water Pitcher that automatically refills, with the option to infuse with a flavour.

Auto Open Door

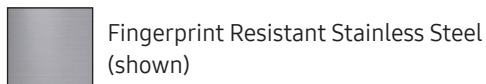
Open the refrigerator with ease, even if your hands are full, with Auto Open Door. With just a light touch of the door sensor, the refrigerator door will fully open.

Dual Ice Maker with Ice Bites™

Select from cubed ice or Ice Bites™ that chills your drink faster.*

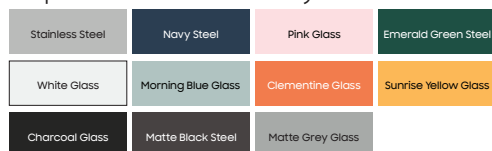
*Compared to cubed ice.

Available Colours



Fingerprint Resistant Stainless Steel (shown)

Bespoke Custom Panel-Ready Colour Selections



Beverage Zone™



Auto Open Door

Design

- Bespoke Design
- Beverage Zone™
- Counter-Depth
- Slide-In Shelf
- LED Lighting
- Gallon Door Bin

Technology

- Wi-Fi Enabled
- Auto Open Door
- UV Deodorizing Filter
- Power Cool & Power Freeze
- Door Alarm
- Water Filter Indicator

Performance

- FlexZone™
- Dual Auto Ice Maker with Ice Bites™ and Cubed Ice
- Extra-Large Flexible Storage
- 2 Crisper Drawers
- Triple Cooling
- Metal Cooling



ENERGY STAR® rated:
634 kWh/yr

RF23DB9700QL

SAMSUNG

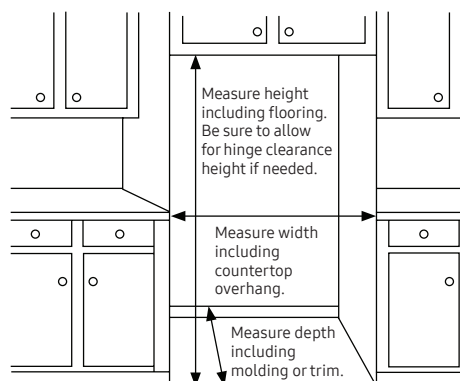
Bespoke Counter-Depth 4-Door Flex™ Refrigerator with Beverage Zone™ and Auto Open Door

Installation Specifications

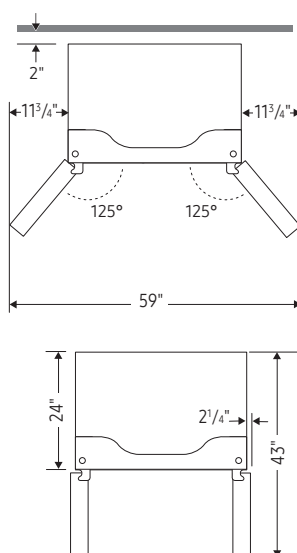
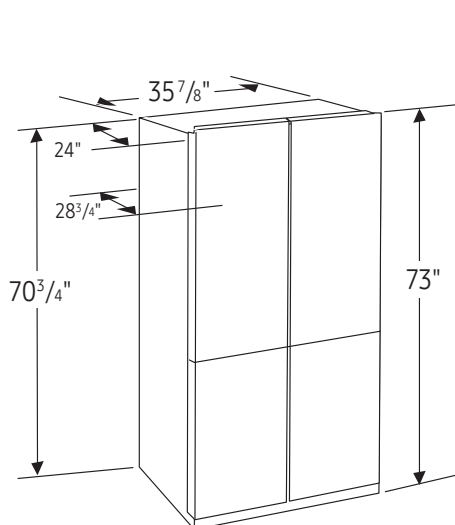
1. Measure the height, width and depth of the opening, making sure to include baseboards, molding tile, countertop overhang, etc. Check to be sure there is enough room to open the door (consider walls, islands or other obstacles when measuring).
2. Refer to illustration below to determine dimensions.
3. Allow $11\frac{3}{4}$ " of clearance on hinge side of refrigerator when installing next to a wall.
4. Allow 2" minimum clearance at rear for proper air circulation and water/electrical connections. Allow a $\frac{3}{8}$ " minimum clearance at sides and top for ease of installation.
5. Ensure each door and entryway in the home is wide enough for the refrigerator to be moved through easily.

For optimal usage and ability to open refrigerator doors completely, do not install next to a wall.

Please note: The following dimensions and cutout information is for planning purposes only. For complete installation details, consult manual packed with product or download manual online at [samsung.com](https://www.samsung.com).



Dimensions



Total Capacity: 22.8 cu. ft.

Refrigerator: 14 cu. ft.

- 1 Slide-In Shelf, 3 Tempered Glass Spill-Proof Shelves
- 2 Clear Crisper Drawers
- 6 Door Bins with 1 Gallon Door Bin
- LED Lighting

Freezer: 4.4 cu. ft.

- Dual Ice Maker in Freezer (Ice Bites™ or Cubed Ice)
2 Ice Buckets with Cover and 1 Scoop
- 4 Slide-Out Shelves
- 6 Door Bins
- LED Lighting

FlexZone™: 4.4 cu. ft.

- 5 Temperature Settings: Freeze, Soft Freeze, Meat/Fish, Fruit/Veggies, Beverage

Accessories

Water Filter: HAF-QIN

Warranty

One (1) Year Parts and Labour on Refrigerator

Ten (10) Years Parts on Digital Inverter Compressor

Product Dimensions & Weight (WxHxD)

Dimensions (WxHxD with hinges, handles and doors):

$35\frac{7}{8}$ " x 73" x $28\frac{3}{4}$ "

Dimensions (WxHxD without hinges and door):

$35\frac{7}{8}$ " x $70\frac{3}{4}$ " x 24"

Net Weight : 337.3 lb (133 kg)

Shipping Dimensions & Weight (WxHxD)

Dimensions: $38\frac{1}{4}$ " x $78\frac{5}{8}$ " x $30\frac{5}{8}$ "

Shipping Weight : 357.1 lb (162 kg)

Colour

Fingerprint Resistant

Stainless Steel

Model

RF23DB9700QLAA

UPC

887276826868

Bespoke Panel Colour Selection

Stainless Steel, White Glass, Charcoal Glass, Navy Steel, Morning Blue Glass, Matte Black Steel, Pink Glass, Clementine Glass, Matte Grey Glass, Emerald Green Steel, Sunrise Yellow Glass