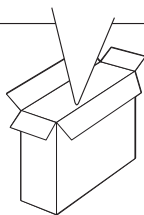
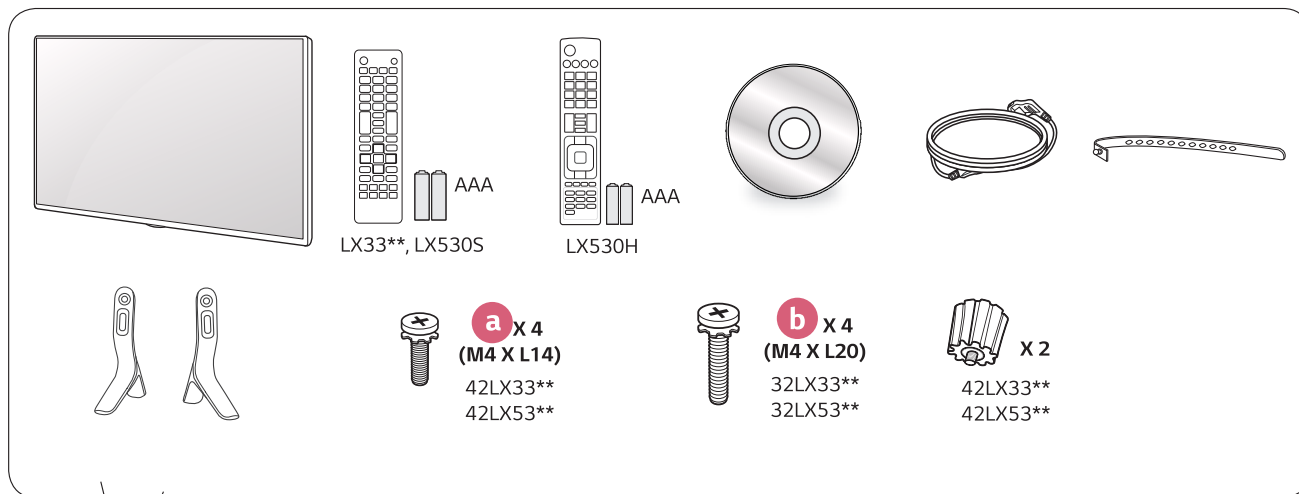


Quick Start Guide



▶ www.lg.com/in



Unpacking

Check your product box for the following items. If there are any missing accessories, contact the local dealer where you purchased your product. The illustrations in this manual may differ from the actual product and item.

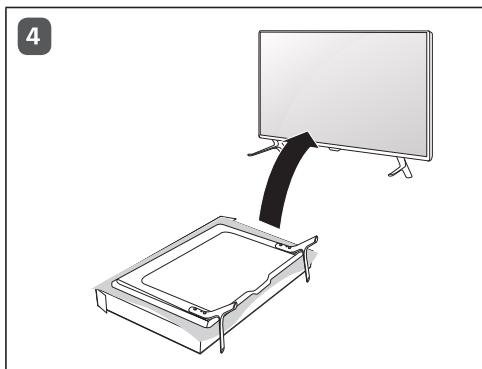
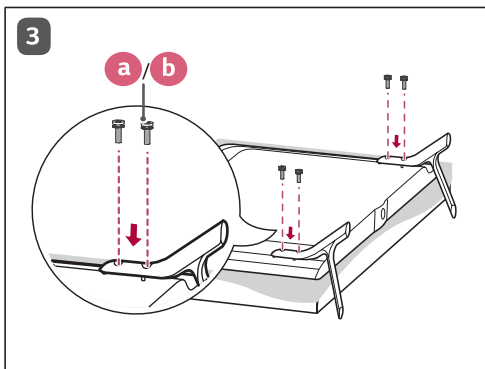
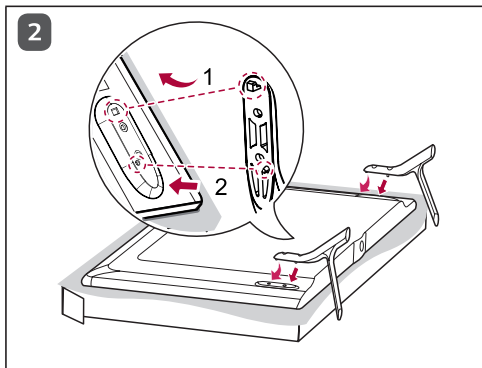
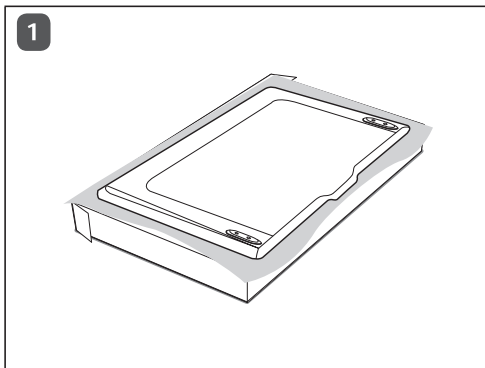


English

- Read **Safety and Reference**.

- For the power supply and power consumption, refer to the label attached to the product.

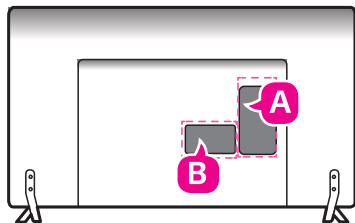
1



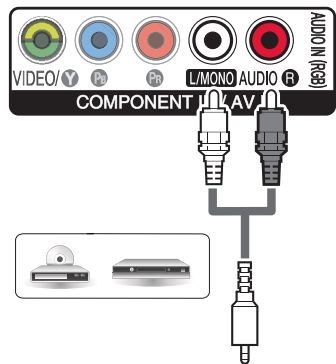
CAUTION

- When attaching the stand to the TV set, place the screen facing down on a cushioned table or flat surface to project the screen from scratches.

2



B



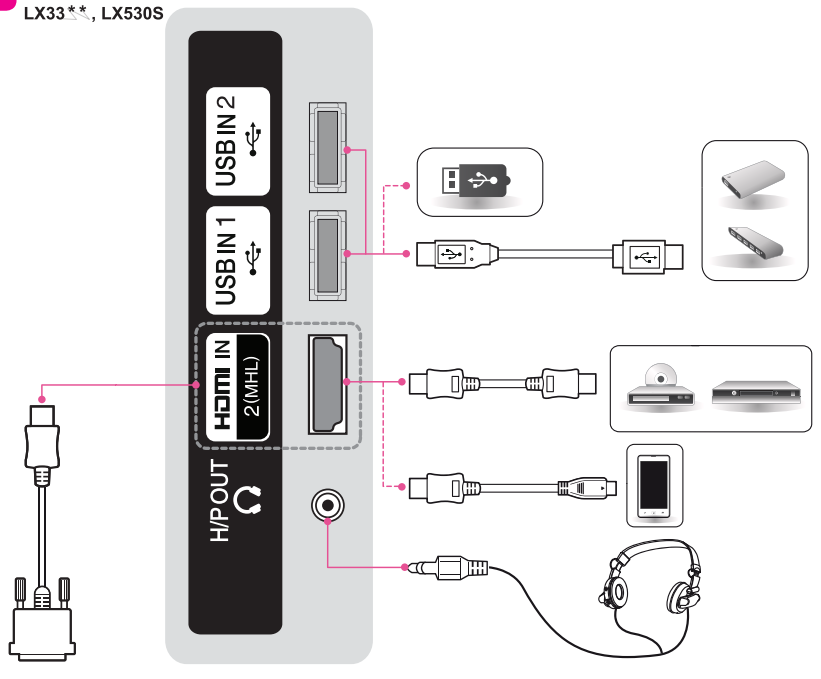
(2) MHL



- MHL is also Named smart mobile link
- Connect the mobile phone to the HDMI IN 2 (MHL) port to view the phone screen on the TV.
- The MHL passive cable is needed to connect the TV and a mobile phone.
- This only works for the MHL-enabled phone.
- Some applications can be operated by the remote control.
- Remove the MHL passive cable from the TV when:
 - » the MHL function is disabled.
 - » your mobile device is fully charged in standby mode.

A

LX33**, LX530S



(1) USB Connection



NOTE

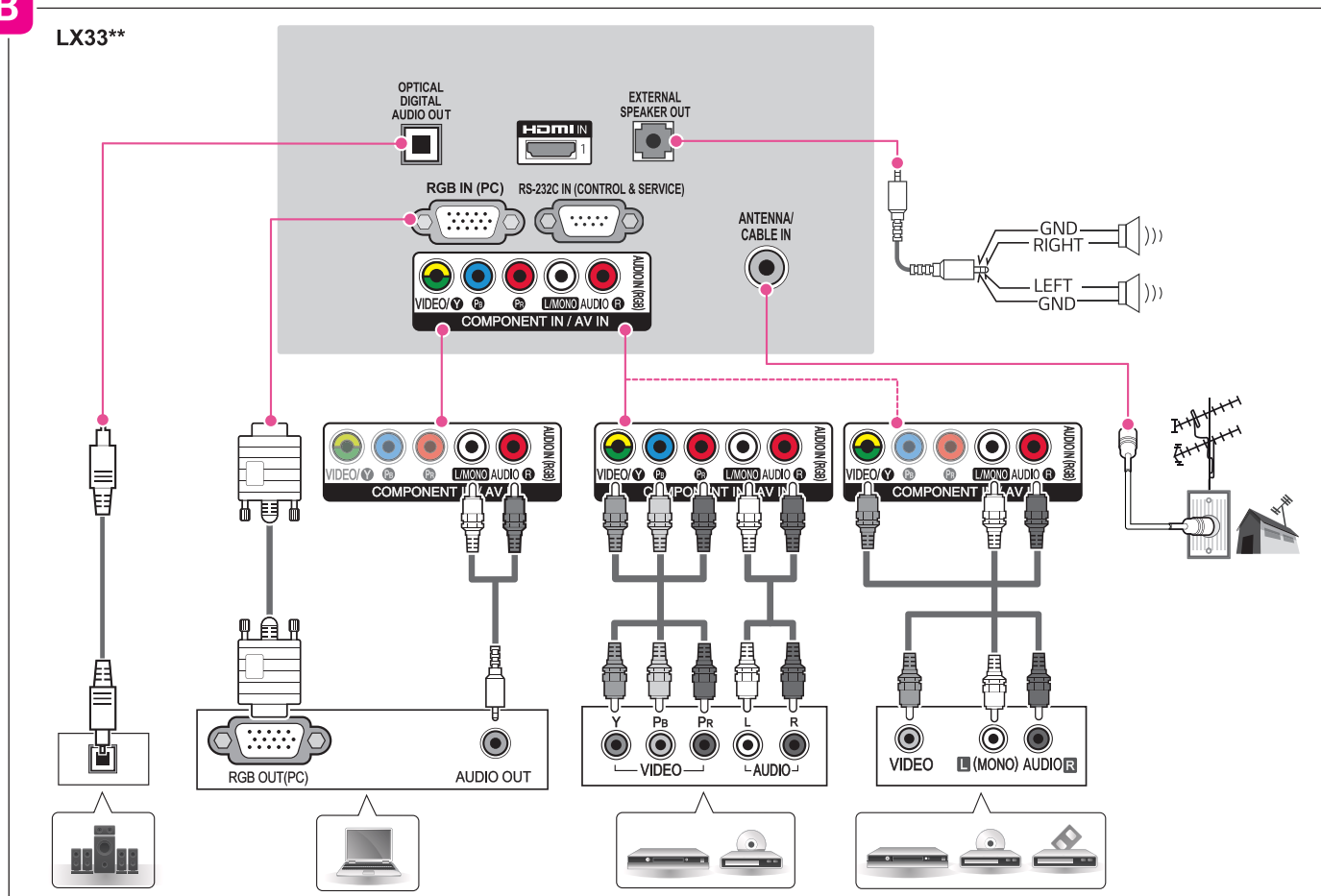
Connect a USB storage device such as a USB flash memory, external hard drive, or a USB memory card reader to the TV and access the Smart Share menu to use various multimedia files.

(3) Head Phone



NOTE

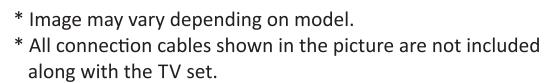
- AUDIO menu items are disabled when connecting a headphone.
- When changing AV MODE with a headphone connected, the change is applied to video but not to audio.
- Optical Digital Audio Out is not available when connecting a headphone.
- Headphone impedance: 16 Ω
- Max audio output of headphone: 9 mW to 15 mW
- Headphone jack size: 0.35 cm

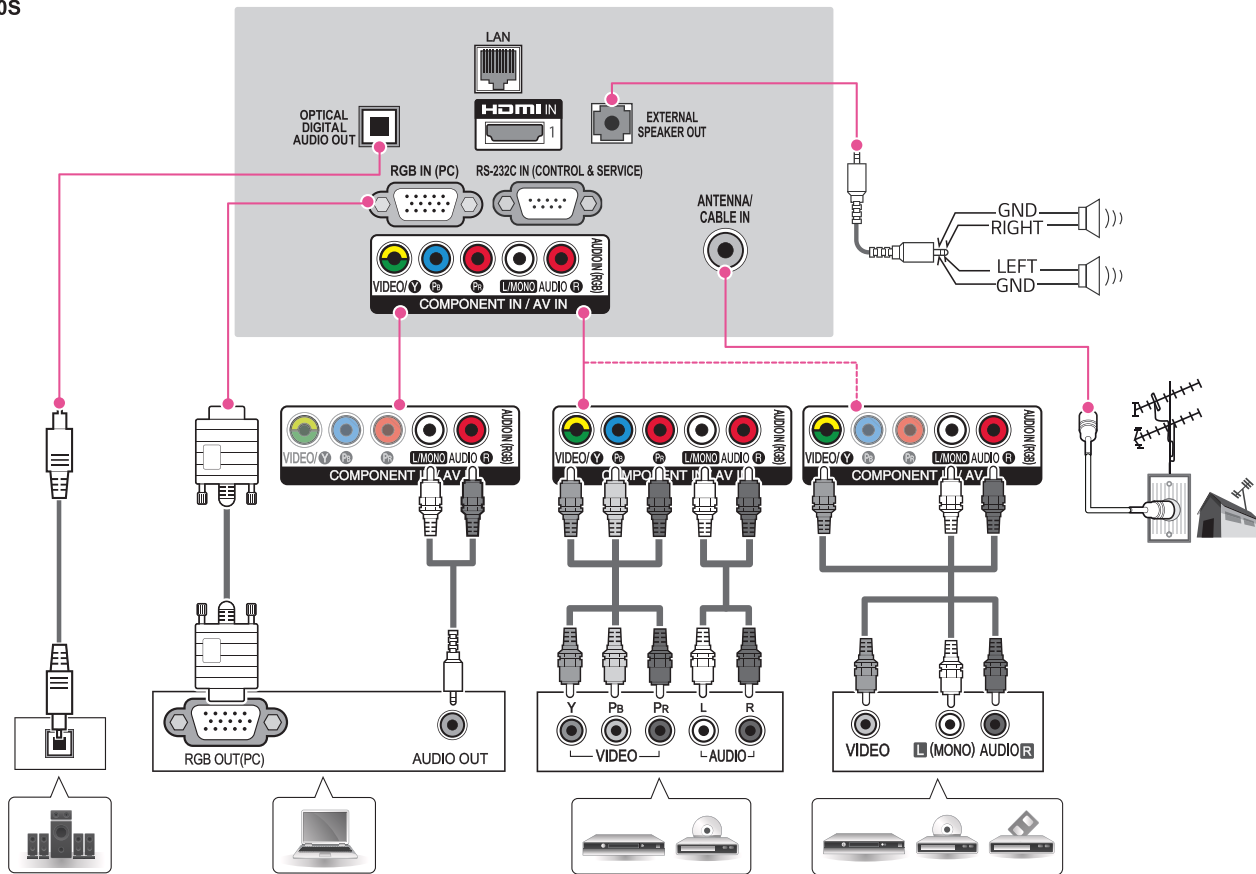


* Image may vary depending on model.

* All connection cables shown in the picture are not included along with the TV set.

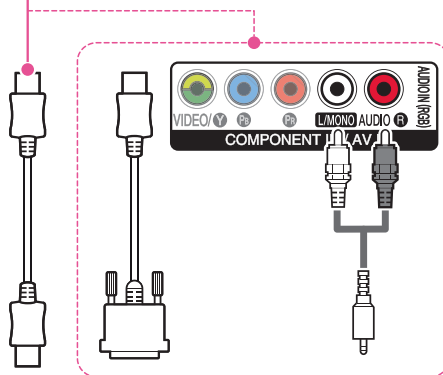
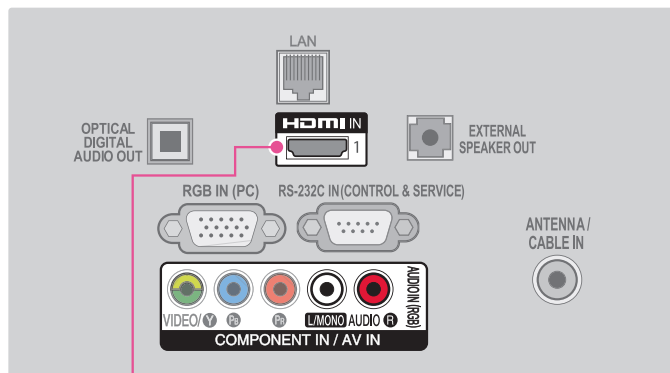
LX33**





* Image may vary depending on model.

* All connection cables shown in the picture are not included along with the TV set.

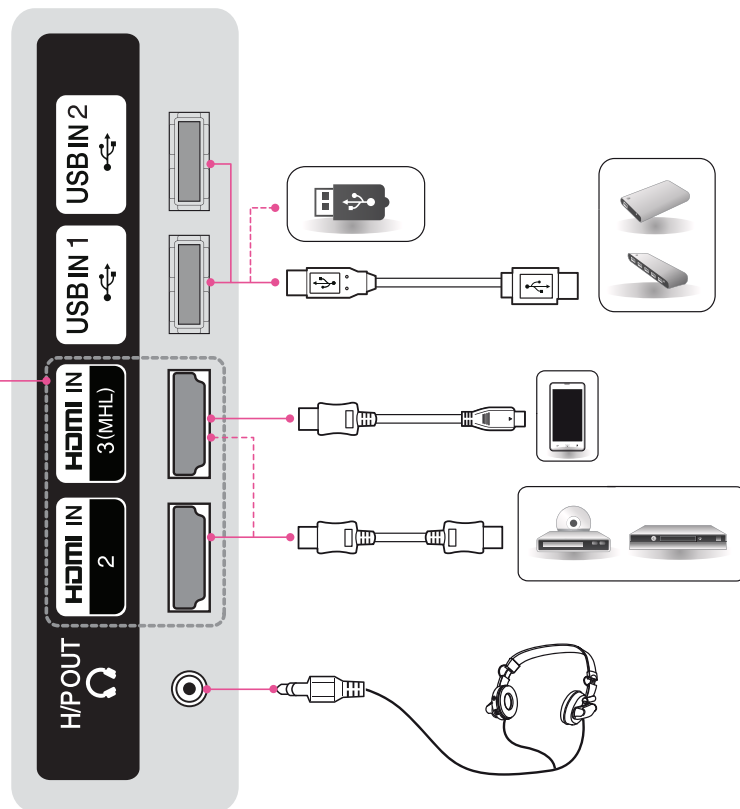
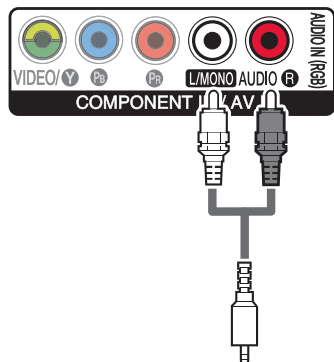


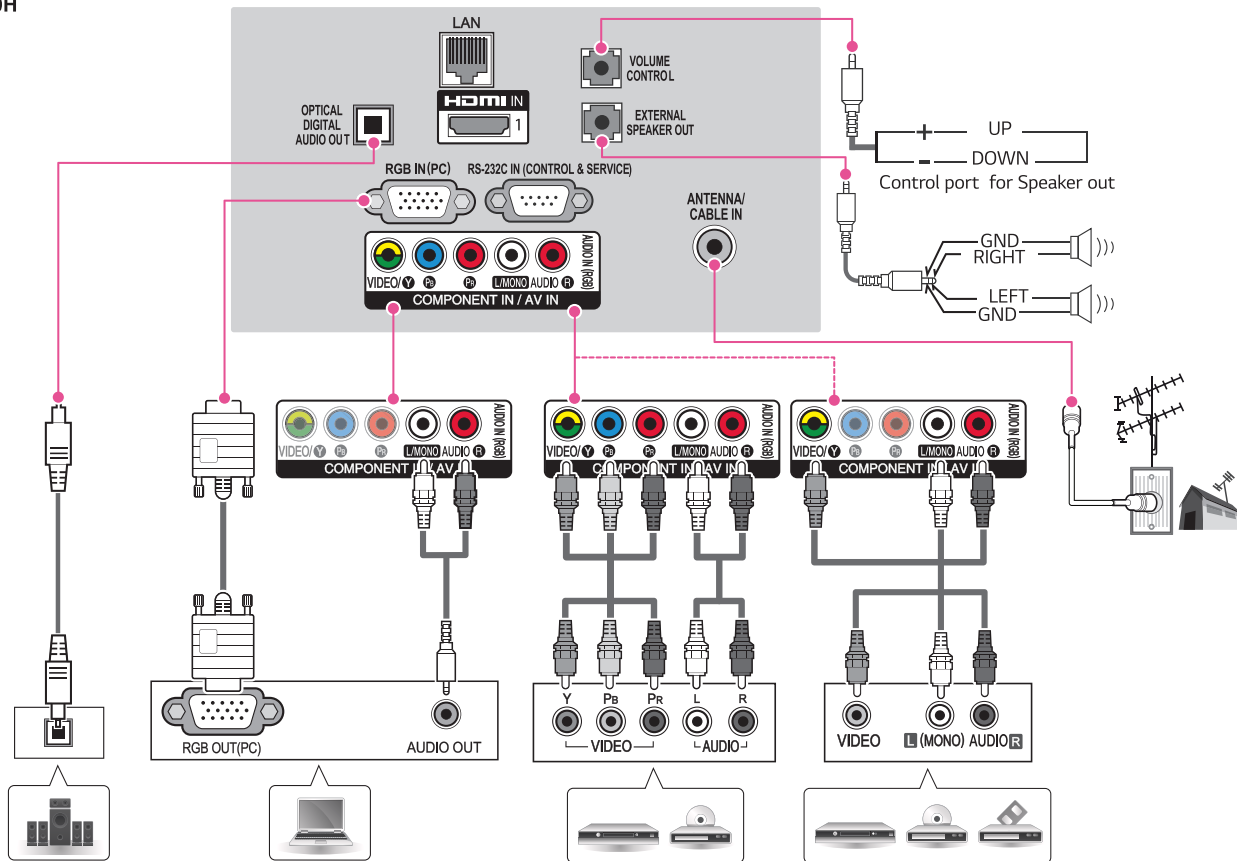
* Image may vary depending on model.

* All connection cables shown in the picture are not included along with the TV set.

A

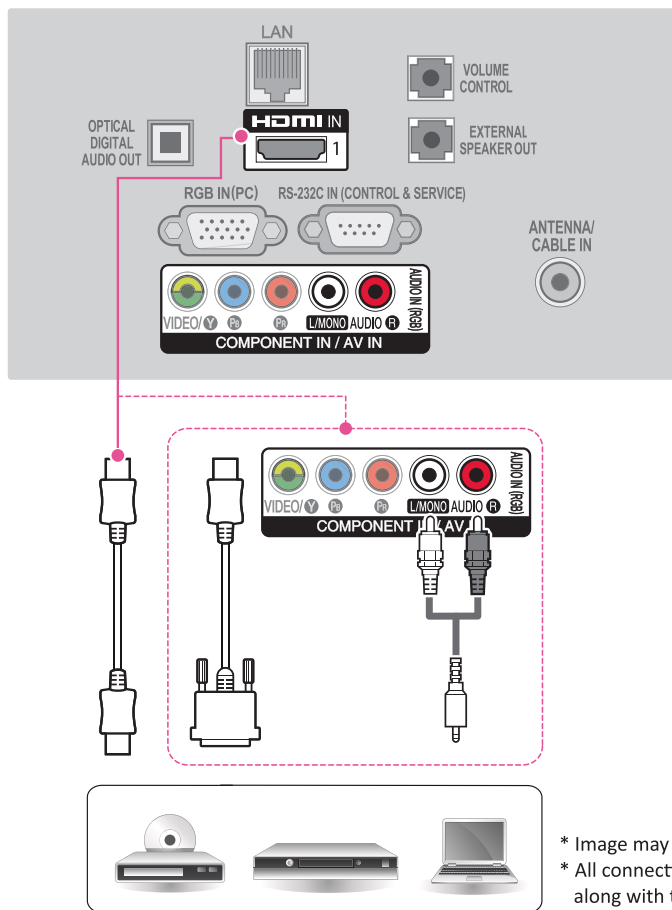
LX530H

**B**



* Image may vary depending on model.

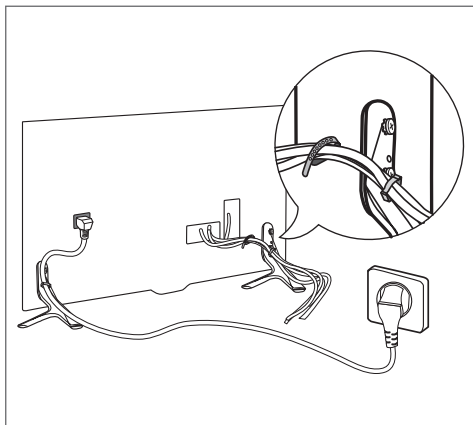
* All connection cables shown in the picture are not included along with the TV set.

B**LX530H**

* Image may vary depending on model.

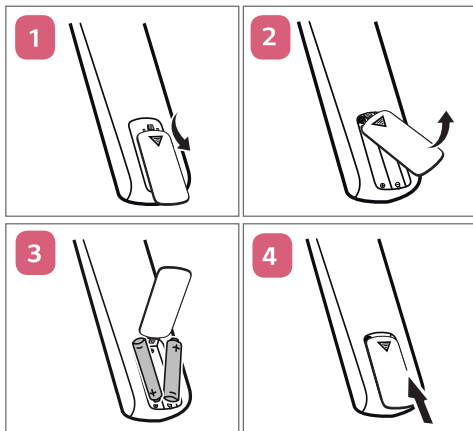
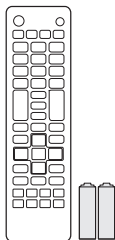
* All connection cables shown in the picture are not included along with the TV set.

3



4

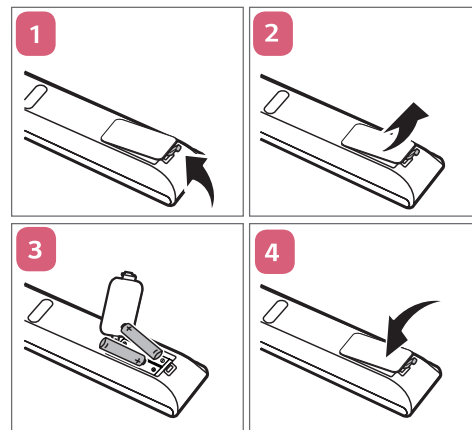
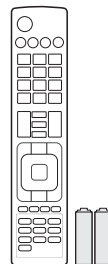
LX33**, LX530S



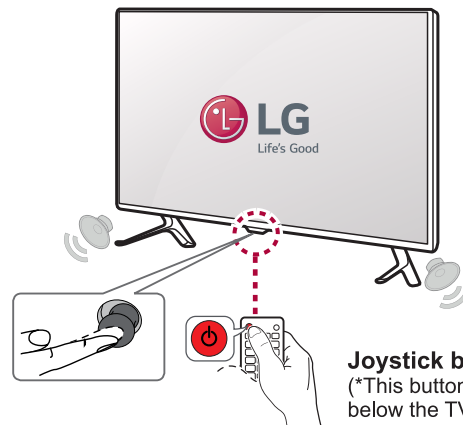
NOTE

Do not use sub standard batteries in TV remote which may lead to leakage & damage the remote control unit permanently. For long unused applications of remote controller it is advisable to remove batteries from remote control unit.

LX530H



5

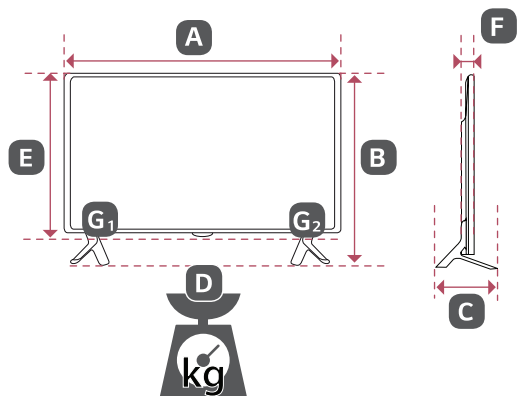


Joystick button
(*This button is located below the TV screen)



NOTE

You can set the power indicator light to on or off by selecting OPTION in the main menus.



| | 32LX330C-TA 32LX530S-TA 32LX530H-TA | 42LX330C-TA 42LX530S-TA |
|---|---|----------------------------|
| A x B x C (mm) | 732 x 481 x 207 | 961 x 612 x 218 |
| A x E x F (mm) | 732 x 437 x 55.5 | 961 x 567 x 55.5 |
| D (kg) | 6.2 | 9.5 |
| D - (G ₁ + G ₂) (kg) | 6.0 | 9.2 |
| Power requirement | AC 100-240 V ~ 50 / 60 Hz | |